

TM PLAY components

A **PLAYCORE** Company



Commercial Outdoor and Indoor Roto-Molded Playground Parts



A **PLAYCORE** Company

165 Stoneman Drive
Shallow Lake, Ontario, Canada
spioplastics.com

To Order:
800.269.6533



Copyright © 2019, SPI Plastics. Revised February 2021.
All rights reserved.



YOUR LEADER in roto-molded playground parts!

Whether you are interested in a playground climber, slide, or tube, we've worked hard to provide you with unique roto-molded plastic parts to help you create a spectacular playground. Our selection of commercial playground pieces are designed with world-wide safety standards in mind and are available for both indoor and outdoor use.

02 Play Accessories

06 Panels

08 Climbers

09 Roofs

10 Slides

18 Colors

Play Accessories Indoor & Outdoor Play Accessories



Elephant Rider RA,EL,N/B

Dimensions: 39" l x 27" w x 29" h
(99.1 cm x 68.6 cm x 73.7 cm)
Weight: 40 lbs (18 kg)

Spring Stand: RA,SPRING,EL
Stationary Base: HW,STAND,EL



Frog Rider RA,FR,N/B

Dimensions: 35" l x 21" w x 23" h
(88.9 cm x 53.3 cm x 58.4 cm)
Weight: 29 lbs (13.2 kg)

Spring Stand: RA,SPRING
Stationary Base: HW,STAND,WH/FR

PLAY ACCESSORY DETAILS

- Indoor and outdoor applications
- Made from durable, roto-molded plastic
- Dimensions and weights are approximate
- Visit spioplastics.com for specification sheets

Frog Rider RA,FR,N/B

Dimensions: 35" l x 21" w x 23" h
(88.9 cm x 53.3 cm x 58.4 cm)
Weight: 29 lbs (13.2 kg)

Spring Stand: RA,SPRING
Stationary Base: HW,STAND,WH/FR



RA,FR,N/B and RA,SPRING



Decks

- 3" height (7.6 cm)
- 3 shapes available
- Multiple colors available

	36" Square	36" Triangular	48" Square	48" Triangular	48" Pie
Part No.	DECK3	DECK3,TRI	DECK4	DECK4,TRI	DECK4,PIE
Dimensions	36" (91.4 cm)	36" (91.4 cm)	48" (121.9 cm)	48" (121.9 cm)	48" (121.9 cm)
Weight	30 lbs (13.6 kg)	18 lbs (8.2 kg)	60 lbs (27.2 kg)	29 lbs (13.2 kg)	40 lbs (18.2 kg)

Play Accessories
Indoor & Outdoor Play Accessories



Log Roll LOGROLL
 Dimensions: 48" l x 16" diameter
 (122 cm x 40.6 cm diameter)
 Weight: 38 lbs (17.2 kg)



Triple Toss TRT-03
 Ages: 2-12
 Dimensions: 48" l x 40" w x 36" h
 (121.9 cm x 101.6 cm x 91.4 cm)
 Weight: 45 lbs (20 kg)
 Only available in Blue (BL), Green (GR), and Tan (TA)



ADA ACCESSIBLE
Adventure Table ADV, TABLE
 Ages: 2-12
 Dimensions: 73.5" l x 31" w x 32" h
 (186.9 cm x 78.7 cm x 81.3 cm)
 Weight: 80 lbs (36.3 kg)



Steering Wheel SW
 Dimensions: 13" diameter x 6" h
 (33 cm diameter x 15.2 cm)
 Weight: 3 lbs (1.4 kg)



Stepping Stone STEPSTONE
 Dimensions: 14" diameter x 8" h
 (35.6 cm diameter x 20.3 cm)
 Weight: 5 lbs (2.3kg)

PRIVATE LABEL OPTION
Sneaker Keepers

	Single Component (6 Openings)	Sneaker Keeper Cap	Horizontal Sneaker Keeper (18 Openings) 3 components + cap	Horizontal Sneaker Keeper (24 Openings) 4 components + cap
Part No.	SKS	SKS,CAP	SKS,3-RISE	SKS,4-RISE
Dimensions	53" l x 13" w x 14.5" h (135 cm x 33 cm x 36 cm)	13.5" l x 47.25" w x 26" h (34.3 cm x 120 cm x 66 cm)	53" l x 13" w x 43" h (135 cm x 33 cm x 109 cm)	53" l x 13" w x 54" h (135 cm x 33 cm x 137 cm)
Weight	20 lbs (9.1 kg)	15 lbs (6.8 kg)	100 lbs (45.4 kg)	120 lbs (54.4 kg)



Play Accessories Transition and Elbow Components



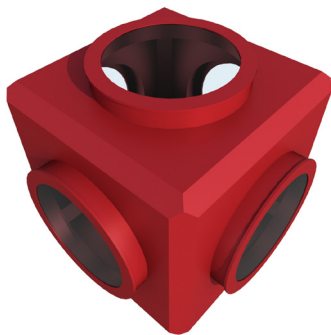
T-Tube TT30

Dimensions: 51.5" l x 41.5" w x 31.75" h
(131 cm x 105 cm x 81 cm)
Weight: 78 lbs (35.4 kg)



30" 30° Elbow E3030

Diameter: 30" (72.6 cm)
Angle: 30°
Weight: 65 lbs (29.5 kg)



Junction Cube JC30

Dimensions: 55.5" l x 55.5" w x 40.5" h
(141 cm x 141 cm x 118 cm)
Weight: 100 lbs (45.4 kg)



Turbo Junction JCTURBO

Dimensions: 48.3" l x 46.6" w x 38.4" h
(123 cm x 118 cm x 98 cm)
Weight: 105 lbs (47.6 kg)



24" 30° Elbow E2430

Diameter: 24" (61 cm)
Angle: 30°
Weight: 28 lbs (12.7 kg)



24" 90° Elbow E2490

Diameter: 24" (61 cm)
Angle: 90°
Weight: 35 lbs (15.9 kg)



30" 45° Elbow E3045

Diameter: 30" (72.6 cm)
Angle: 45°
Weight: 75 lbs (34 kg)



30" 90° Elbow E3090

Diameter: 30" (72.6 cm)
Angle: 90°
Weight: 65 lbs (29.5 kg)

Play Accessories Tubes & Tube Components



Tubes



Custom Crawl Tube Assemblies

- 24" and 30" diameters available
- Utilize crawl tubes, incline crawl tubes, elbow crawls, and more!
- Contact us for a customized design



2' Tube

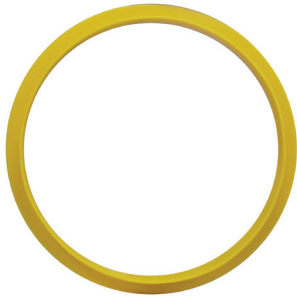
Full Tubes

- 24" or 30" diameter options
- All feature a 3" bell
- Part numbers in table below



Flanged Tube Exit EE30

Diameter: 30" (76.2 cm)
Length: 39" (99.1 cm)
Weight: 45 lbs (20.4 kg)
Includes 4" bell



Straight Flange STRF

Diameter: 34.5" (87.6 cm)
Weight: 15 lbs (6.8 kg)

	24" Full 2' Tube	24" Full 7' Tube	30" Full 2' Tube	30" Full 5' Tube	30" Full 6' Tube	30" Full 7' Tube
Part No.	24X2FTB	24X7FTB	30X2FTB	30X5FTB	30X6FTB	30X7FTB
Diameter	24" (61 cm)	24" (61 cm)	30" (76.2 cm)	30" (76.2 cm)	30" (76.2 cm)	30" (76.2 cm)
Length	24" (61 cm)	84" (213.4 cm)	24" (61 cm)	60" (152.4 cm)	72" (182.9 cm)	84" (213.4 cm)
Weight	30 lbs (13.6 kg)	80 lbs (36.3 kg)	42 lbs (19 kg)	100 lbs (45.4 kg)	105 lbs (47.6 kg)	112 lbs (50.8 kg)

Panels Activity Panels



Ball Turn Panel AC,BALLTURN
Depth: 5" (12.7 cm)
Weight: 25 lbs (11.3 kg)

ACTIVITY PANEL DETAILS

- Dimensions: 43" x 41" (109 cm x 104 cm)
- Varying Depths
- Dimensions and weights are approximate
- Not all panels are suitable for outdoor use



Pinball Panel AC,PINBALL
Depth: 5" (12.7 cm)
Weight: 30 lbs (13.6 kg)



C-Force Panel AC,CFORCE
Depth: 5" (12.7 cm)
Weight: 30 lbs (13.6 kg)



Driving Panel AC,DRIVING
Depth: 8" (20.3 cm)
Weight: 30 lbs (13.6 kg)



Gears Panel AC,GEARS
Depth: 5" (12.7 cm)
Weight: 30 lbs (13.6 kg)



Gyro Panel AC,GYRO
Depth: 5" (12.7 cm)
Weight: 25 lbs (11.3 kg)



Mirror Panel AC,MIRROR
Depth: 3" (7.6 cm)
Weight: 25 lbs (11.3 kg)



Sign Language Panel AC,SIGNLANGUAGE
Depth: 3" (7.6 cm)
Weight: 25 lbs (11.3 kg)



Tic-Tac-Toe Panel AC,TIC-TAC-TOE
Depth: 8" (20.3 cm)
Weight: 35 lbs (15.9 kg)



Tic-Tac-Toe Blocks TTT9R
Set of 9
Items Bagged
Weight: 15 lbs (6.8 kg)

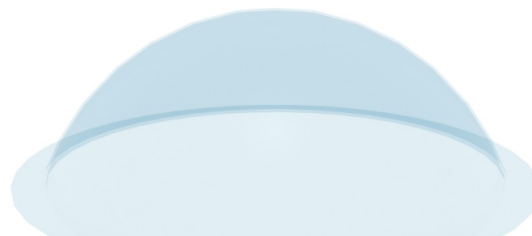
Panels Barrier, Entry, & Bubble Panels



Clear Bubble Window

BARRIER & ENTRY PANEL DETAILS

- Safe entry into a tube slide or crawl tube
- Recessed on both sides
- Chamfered edges
- Dimensions and weights are approximate



24" Clear Bubble Window B24,CL

Diameter: 24" (61 cm)
 Dimensions: 28" x 28" x 10" rise
 (71 cm x 71 cm x 25 cm rise)
 Weight: 5 lbs (2.3 kg)
 Hole Diameter: 24" (61 cm)

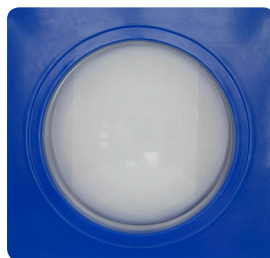
30" Clear Bubble Window B30,CL

Diameter: 30" (76.2 cm)
 Dimensions: 35" x 35" x 10" rise
 (89 cm x 89 cm x 25 cm rise)
 Weight: 7 lbs (3.2 kg)
 Hole Diameter: 30" (76.2 cm)



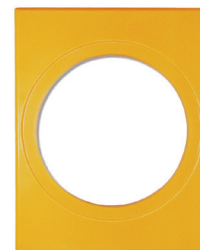
Clear Bubble Window Panel BP24C

Dimensions: 39" x 31" (99 cm x 78.8 cm)
 Depth: 10" (25.4 cm)
 Weight: 20 lbs (9.1 kg)
 Hole Diameter: 24" (61 cm)



Clear Bubble Window Panel BP30C

Dimensions: 43" x 41" (109 cm x 104 cm)
 Depth: 10" (25.4 cm)
 Weight: 27 lbs (12.2 kg)
 Hole Diameter: 30" (76.2 cm)



Flat Panel P24,2002

Dimensions: 39" x 31" (99 cm x 78.8 cm)
 Depth: 3" (7.6 cm)
 Weight: 15 lbs (6.8 kg)
 Hole Diameter: 24" (61 cm)



Flat Panel FP30,2002

Dimensions: 43" x 41" (109 cm x 104 cm)
 Depth: 3" (7.6 cm)
 Weight: 20 lbs (9.1 kg)
 Hole Diameter: 30" (76.2 cm)



Activity Panel ACTP,2002

Dimensions: 43" x 41" (109 cm x 104 cm)
 Depth: 2.5" (6.4 cm)
 Weight: 20 lbs (9.1 kg)
 Opening Size: 28.5" Square (72.4 cm)



Ventilation Panel FS,SP5

Dimensions: 43" x 41" (109 cm x 104 cm)
 Depth: 3" (7.6 cm)
 Weight: 20 lbs (9.1 kg)

Climbers Outdoor Play Climbers



Fredrock Climber FRC

Dimensions: 78.5" l x 44.75" w x 7" d
(199.4 cm x 113.7 cm x 17.8 cm)
Weight: 80 lbs (36.3 kg)
Ages: 5-12

- 4' or 5' deck height
- Features designs on both sides



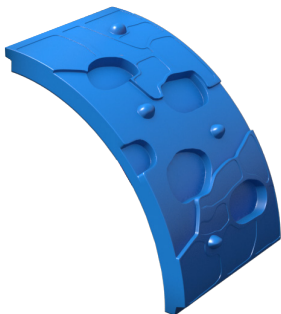
Cliff Hanger CLIFFHANGER

Dimensions: 67" at widest x 8" at smallest x 68.25" l
(170 cm x 20 cm x 173.5 cm)

Weight: 100 lbs (45.4 kg)

Ages: 5-12

- Uses 3½" (9 cm) or smaller diameter pipes (not included) inside or bracket to outside vertical mounting area
- Can be designed in multiple configurations
- Individual plastic component only



Bedrock Climber BRC

Dimensions: 66" l x 36" w x 6" d
(167.6 cm x 91.4 cm x 15.2 cm)

Weight: 65 lbs (29.5 kg)

Ages: 5-12

Deck Height: 4' (1.2 m)



Bedrock Cap BRC,CAP

Dimensions: 68.5" l x 6" w x 6" d
(174 cm x 15.2 cm x 15.2 cm)

Weight: 12 lbs (5.4 kg)



Dino-Mite™ Climber DINO6

Dimensions: 62" l x 34" w x 90" h
(157.5 cm x 86.4 cm x 228.6 cm)

Weight: 175 lbs (79.4 kg)

Ages: 5-12

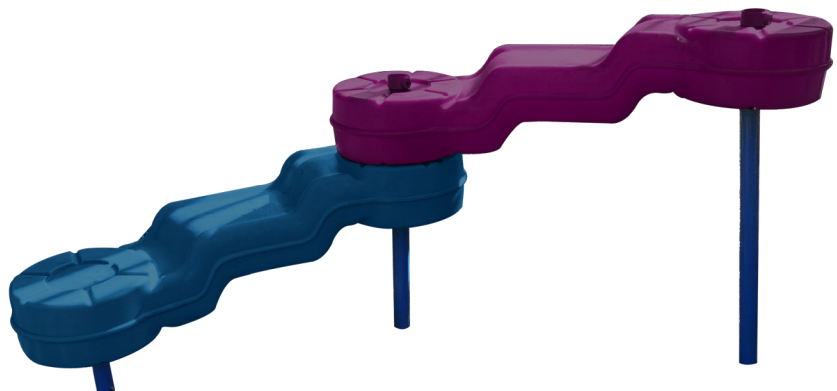
Deck Height: 5' (1.5 m) and 6'

Link™ LINK

Dimensions: 42" l x 12" w x 14.5" h
(105.7 cm x 30.5 cm x 36.8 cm)

Weight: 15 lbs (6.8 kg)

- Endless configurations
- Fits 1.25" - 3.5" (3.3 cm - 9.1cm) pipe diameters (not included)
- Drainage flow built into the design
- Individual plastic component only



Roofs Square & Hexagon Deck Roofs

PLAYGROUND ROOF DETAILS

- Easily installed
- Provides shade to playgrounds
- 4 unique designs available
- Dimensions and weights are approximate



4' Pyramid Roof PR4,2002

Dimensions: 53.5" l x 53.5" w x 23" h
(135.9 cm x 135.9 cm x 58.5 cm)
Weight: 60 lbs (27.3 kg)



Gable Roof GABLEROOF

Dimensions: 56" l x 54.75" w x 27" h
(142 cm x 131 cm x 68 cm)
Weight: 65 lbs (29.5 kg)



Cupola Roof CUPOLAROOF

Dimensions: 70" l x 70" w x 44" h
(178 cm x 178 cm x 112 cm)
Weight: 132 lbs (60 kg)



8' Hex Roof PR8

Dimensions: Outside: 109.5" x 109.5" x 39.75" h
(278.4 cm x 278.4 cm x 101 cm)
Inside: 92" x 92" (234 cm x 234 cm)
Weight: 170 lbs (77 kg)

Deck Mounting systems

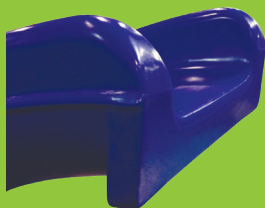


1° DRAFT SYSTEM

The face of the slide features a 1° draft so the top of the slide face contacts the deck first.

Used By:

- 3', 4', and 5' Flat Slides
- 4' and 5' Curve Slides
 - 6' Spiral Slide
- Starglide Hood
- Starglide Single Entrance



CONCAVE SYSTEM

The face of the slide is concave. When placed against the face of the deck, the outer edges of the slide contact the deck first.

Used By:

- 2' Flat Slide
- 3' Curve Slide
- 3', 4', and 5' Triple Rail Slide
 - 4', 5', and 6' Wave Slide
- 6' Spiral Slide with Hood

Slides Slide Hoods



Double Wall Slide Hood
DWFS,HOOD



TRS,HOOD48



TRS,HOOD

Slide Hoods

	Part No.	Dimensions	Weight
Double Wall Slide Hood	DWFS,HOOD	40" l x 38" h x 16" d (101.6 cm x 96.5 cm x 40.6 cm)	28 lbs (13 kg)
36" Double Wall Slide Hood	DWFS,HOOD36	36" l x 44" h x 15" d (91.4 cm x 112 cm x 38.1 cm)	30 lbs (14 kg)
Triple Rail Slide Hood	TRS,HOOD	45" l x 30" h x 16" d (114.3 cm x 76.2 cm x 40.6 cm)	27 lbs (12.3 kg)
48" Triple Rail Slide Hood	TRS,HOOD48	48" l x 33" h x 14.5" d (121.9 cm x 83.8 cm x 36.8 cm)	30 lbs (13.6 kg)

Slides One-Piece Slides



4' Double Wall Wave Slide
4DWWS

ONE-PIECE SLIDE DETAILS

- No seams or joints, eliminating concerns of potential string entrapment
- Molded-in foot
- Rounded corners



Curved Slide (Right Turn Only)

	Part No.	Deck Height	Width	Bed Width	Length	Weight
3' 90° Curved Slide	3CURVED,N	36" (91.4 cm)	24" (61 cm)	18" (45.7 cm)	70" (177.8 cm)	65 lbs (29.5 kg)
4' Curved Slide	4CURVED	48" (121.9 cm)	24" (61 cm)	18" (45.7 cm)	111" (281.9 cm)	90 lbs (41 kg)
5' Curved Slide	5CURVED	60" (152.4 cm)	24" (61 cm)	18" (45.7 cm)	130" (330.2 cm)	110 lbs (50 kg)

Double Wall Flat Slide

	Part No.	Deck Height	Width	Bed Width	Length	Weight
2' Double Wall Flat Slide	2DWFS	24" (61 cm)	24" (61 cm)	17" (43.2 cm)	58" (147.3 cm)	40 lbs (18.2 kg)
3' Double Wall Flat Slide	3DWFS	36" (91.4 cm)	23.5" (59.7 cm)	17.5" (44.5 cm)	90" (228.6 cm)	65 lbs (29.5 kg)
4' Double Wall Flat Slide	4DWFS	48" (121.9 cm)	23.5" (59.7 cm)	17.5" (44.5 cm)	116" (294.6 cm)	80 lbs (36.3 kg)
5' Double Wall Flat Slide	5DWFS	60" (152.4 cm)	23.5" (59.7 cm)	17.5" (44.5 cm)	132" (335.3 cm)	100 lbs (45.4 kg)

Double Wall Wave Slide

	Part No.	Deck Height	Width	Bed Width	Length	Weight
4' Double Wall Wave	4DWWS	48" (121.9 cm)	24" (61 cm)	17" (43.2 cm)	108" (274.3 cm)	85 lbs (38.5 kg)
5' Double Wall Wave	5DWWS	60" (152.4 cm)	24" (61 cm)	17" (43.2 cm)	128" (325.1 cm)	90 lbs (40.8 kg)
6' Double Wall Wave	6DWWS,2002	72" (183 cm)	24.5" (62.2 cm)	17.5" (44.5 cm)	145" (368.3 cm)	110 lbs (50 kg)

Slides Triple Rail Slides



3' Triple Rail Slide with Foot
3TRS

- TRIPLE RAIL SLIDE DETAILS

 - Two slide bedways in one molded unit
 - 4' and 5' options have one concave and one convex slide bedway
 - Molded-in foot (except 3' without foot)
 - Rounded corners (except 3' without foot)

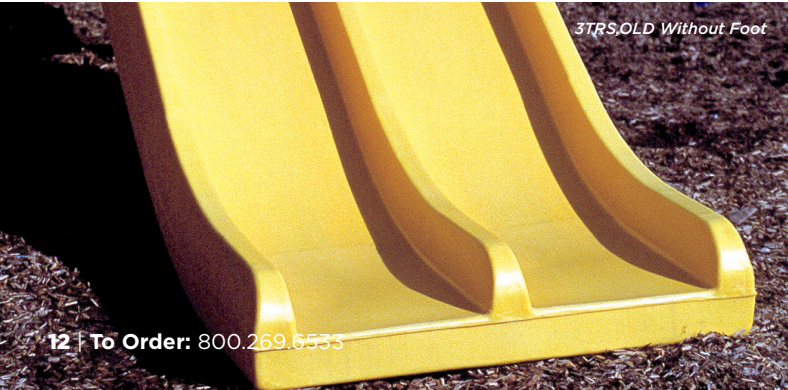


Triple Rail Slide

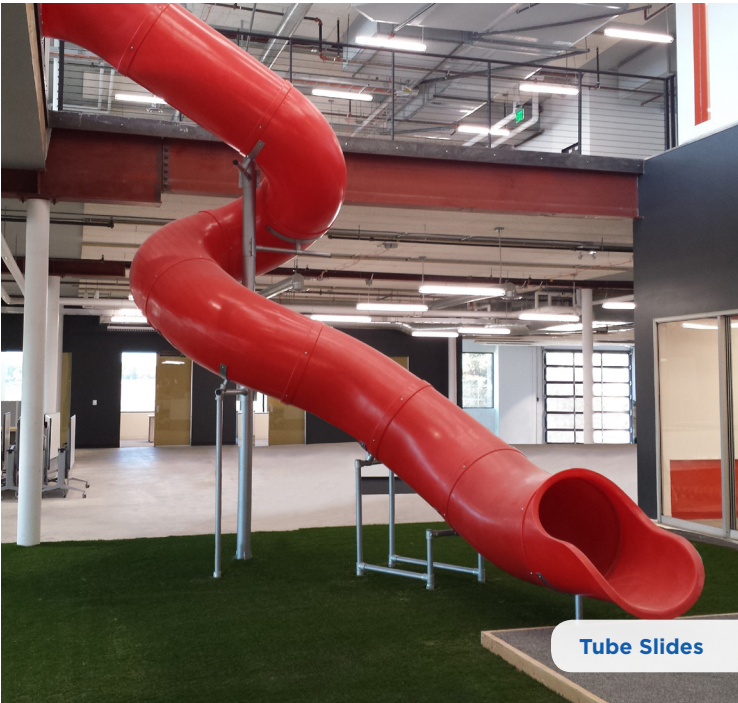
	Part No.	Deck Height	Width	Each Bed Width	Length	Weight
3' Triple Rail Slide with Foot	3TRS	36" (91.4 cm)	42" (107.7 cm)	17" (43.2 cm)	60" (152.4 cm)	80 lbs (36.3 kg)
3' Triple Rail Slide without Foot	3TRS,OLD	36" (91.4 cm)	36" (91.4 cm)	13" (33 cm)	78" (198 cm)	75 lbs (34 kg)
4' Triple Rail Slide	4TRS	48" (121.9 cm)	41" (104 cm)	17" (43.2 cm)	97.25" (247 cm)	130 lbs (59 kg)

Triple Rail Wave Slide

	Part No.	Deck Height	Width (At Deck)	Width (At Exit)	Each Bed Width	Length	Weight
5' Triple Rail Wave Slide	5TRS	60" (152 cm)	41" (104 cm)	55.5" (141 cm)	16.25" (41.3 cm)	117" (297 cm)	150 lbs (68 kg)



Slides Spiral & Tube Slides



Tube Slides



Spiral Slide DE-4437 + Slide Hood DE-4437-H

Deck Height: 68.5" (1.7 m)

Width: 45.625" (1.2 m)

Height: 110.625" (2.8 m)

Weight: 150 lbs (81.6 kg) (slide), 18 lbs (8.2kg) (hood)

Only available in Blue (BL), Dark Red (DR), Dark Yellow (DY), Green (GR), and Tan (TA)

Custom Tube Slides

- Available in 30" diameters
- Molded in bell joints allow for connections for additional length or use with elbows
- Straight, curve, hook, veer, and snake tube slide designs available
- Contact us for a custom design

Installation Suggestions:

- | | |
|-------------------|-----------------|
| • Adventure Parks | • Backyards |
| • Campgrounds | • Churches |
| • Home/Cottages | • Boat Docks |
| • Office | • Fire Stations |
| • Tree Houses | • Daycares |

Custom Spiral Tube Slides

- Available in 30" diameters
- Molded in bell joints allow for connections for additional length or use with elbows
- Contact us for a custom design

Installation Suggestions:

- | | |
|-------------------|-----------------|
| • Adventure Parks | • Backyards |
| • Campgrounds | • Churches |
| • Home/Cottages | • Boat Docks |
| • Office | • Fire Stations |
| • Tree Houses | • Daycares |

Slides Starglide Sectional Slides



SECTIONAL SLIDE DETAILS

- Available in multiple configurations
- Available from 3' to 8' deck heights
- Available with or without slide hood
- Veer designs are 45°, turn designs are 90°



*Starglide 5' Triple Bed Slide - Veer Left, Straight, Veer Right SG,5TBS,VSV
Weight: 372 lbs (169 kg)*



Starglide 7' Turn Left SG,7TURN,L
Weight: 192 lbs (87 kg)



Starglide 7' Wave SG,7W
Weight: 192 lbs (87 kg)



Starglide 6' Veer Left SGO,6VEER,L
Weight: 151 lbs (68.5 kg)

Slides Starglide Sectional Slides

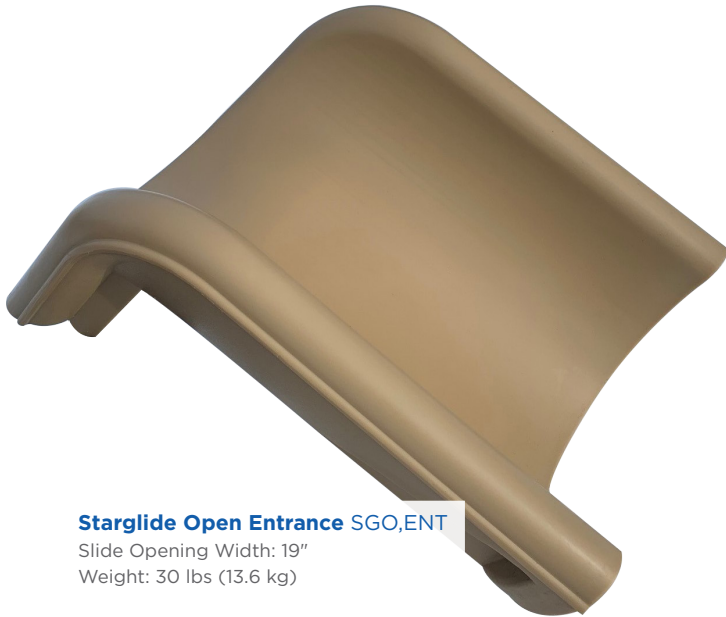
Starglide Triple Bed Slides

Description	Configuration	Part No.	Weight
Starglide 5' Triple Bed Slide	Straight/Straight/Straight	SG,5TBS,SSS	372.5 lbs (169 kg)
	Veer Left/Straight/Veer Right	SG,5TBS,VSV	372.5 lbs (169 kg)
Starglide 6' Triple Bed Slide	Straight/Straight/Straight	SG,6TBS,SSS	473 lbs (214.5 kg)
	Veer Left/Straight/Veer Right	SG,6TBS,VSV	473 lbs (214.5 kg)
Starglide 7' Triple Bed Slide	Straight/Straight/Straight	SG,7TBS,SSS	519.5 lbs (236 kg)
	Veer Left/Straight/Veer Right	SG,7TBS,VSV	519.5 lbs (236 kg)
Starglide 8' Triple Bed Slide	Straight/Straight/Straight	SG,8TBS,SSS	572 lbs (259.5 kg)
	Veer Left/Straight/Veer Right	SG,8TBS,VSV	572 lbs (259.5 kg)

Starglide Sectional Slides

Description	With Slide Hood Part No.	Weight	Without Slide Hood Part No.	Weight
Starglide 3' Straight	SG,3STR	109.5 lbs (50 kg)	SGO,3STR	84.5 lbs (38 kg)
Starglide 4' Straight	SG,4STR	127 lbs (58 kg)	SGO,4STR	102 lbs (46 kg)
Starglide 5' Straight	SG,5STR	142.5 lbs (65 kg)	SGO,5STR	117.5 lbs (53 kg)
Starglide 5' Wave	SG,5W	142.5 lbs (65 kg)	SGO,5W	117.5 lbs (53 kg)
Starglide 5' Veer Left	SG,5VEER,L	142.5 lbs (65 kg)	SGO,5VEER,L	117.5 lbs (53 kg)
Starglide 5' Veer Right	SG,5VEER,R	142.5 lbs (65 kg)	SGO,5VEER,R	117.5 lbs (53 kg)
Starglide 6' Straight	SG,6STR	176 lbs (80 kg)	SGO,6STR	151 lbs (68.5 kg)
Starglide 6' Wave	SG,6W	176 lbs (80 kg)	SGO,6W	151 lbs (68.5 kg)
Starglide 6' Veer Left	SG,6VEER,L	176 lbs (80 kg)	SGO,6VEER,L	151 lbs (68.5 kg)
Starglide 6' Veer Right	SG,6VEER,R	176 lbs (80 kg)	SGO,6VEER,R	151 lbs (68.5 kg)
Starglide 7' Straight	SG,7STR	192 lbs (87 kg)	SGO,7STR	166.5 lbs (75.5 kg)
Starglide 7' Wave	SG,7W	192 lbs (87 kg)	SGO,7W	166.5 lbs (75.5 kg)
Starglide 7' Veer Left	SG,7VEER,L	192 lbs (87 kg)	SGO,7VEER,L	166.5 lbs (75.5 kg)
Starglide 7' Veer Right	SG,7VEER,R	192 lbs (87 kg)	SGO,7VEER,R	166.5 lbs (75.5 kg)
Starglide 7' Snake Left	SG,7SNAKE,L	192 lbs (87 kg)	SGO,7SNAKE,L	166.5 lbs (75.5 kg)
Starglide 7' Snake Right	SG,7SNAKE,R	192 lbs (87 kg)	SGO,7SNAKE,R	166.5 lbs (75.5 kg)
Starglide 7' Turn Left	SG,7TURN,L	192 lbs (87 kg)	SGO,7TURN,L	166.5 lbs (75.5 kg)
Starglide 7' Turn Right	SG,7TURN,R	192 lbs (87 kg)	SGO,7TURN,R	166.5 lbs (75.5 kg)
Starglide 8' Straight	SG,8STR	209 lbs (95 kg)	SGO,8STR	184 lbs (83.5 kg)
Starglide 8' Wave	SG,8W	209 lbs (95 kg)	SGO,8W	184 lbs (83.5 kg)
Starglide 8' Veer Left	SG,8VEER,L	209 lbs (95 kg)	SGO,8VEER,L	184 lbs (83.5 kg)
Starglide 8' Veer Right	SG,8VEER,R	209 lbs (95 kg)	SGO,8VEER,R	184 lbs (83.5 kg)
Starglide 8' Turn Left	SG,8TURN,L	209 lbs (95 kg)	SGO,8TURN,L	184 lbs (83.5 kg)
Starglide 8' Turn Right	SG,8TURN,R	209 lbs (95 kg)	SGO,8TURN,R	184 lbs (83.5 kg)
Starglide 8' Snake Left	SG,8SNAKE,L	209 lbs (95 kg)	SGO,8SNAKE,L	184 lbs (83.5 kg)
Starglide 8' Snake Right	SG,8SNAKE,R	209 lbs (95 kg)	SGO,8SNAKE,R	184 lbs (83.5 kg)

Slides Sectional Slide Parts



Starglide Open Entrance SGO,ENT

Slide Opening Width: 19"
Weight: 30 lbs (13.6 kg)



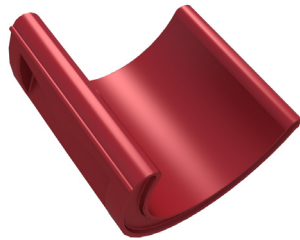
Starglide Entrance SG,ENTRANCE

Weight: 55 lbs (25 kg)



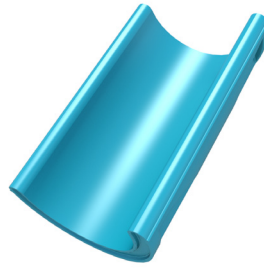
Starglide Exit SG,EXIT

Weight: 54.5 lbs (24.7 kg)



Starglide Straight
SG,STRAIGHT

Weight: 17.6 lbs (8 kg)



Starglide Straight Double
SG,STR,DOUBLE

Weight: 33 lbs (15 kg)



Starglide Turn

Left: SG,TURN,LEFT

Right: SG,TURN,RIGHT

Weight: 33 lbs (15 kg)



Starglide Wave
SG,WAVE

Weight: 33 lbs (15 kg)



Starglide Triple Bed Slide Entrance SG,TBS,ENT

Width: 81.5"

Weight: 110 lbs (50 kg)



Starglide Support
SG,SUPPORT

Weight: 6 lbs (7.25 kg)

Color Options

	Holland Yellow (HY)		Teal (TE)
	Dark Yellow (DY)		Green (GR)
	Orange (OR)		Kentucky Green (KG)
	Woods Orange (WO)		Arizona Turquoise (AT)
	Fuchsia (FU)		Cyan (CY)
	Burgundy (BU)		Blue (BL)
	Dark Red (DR)		Cobalt Blue (CB)
	Purple (PU)		Light Gray (LGY)
	Gecko Green (GC)		Tan (TA)
	Spring Green (SG)*		

**Spring Green not suitable for single wall parts.
Colors shown are representations, inquire for color samples.*

Warranty

SPI Plastics, Inc. (SPI) provides a **10-Year Limited Warranty** for all polyethylene components. This warranty covers structural failure for the value of the product, not including freight charges or labor expense. This warranty does not cover vandalism or cosmetic issues (such as color fading).

CAD Files

.DWG files and images for the various components listed in this catalogue are available for download. CAD files are AutoCAD 2002 compatible, but may work back to AutoCAD 14. Most files are drawn in solids but some complex components are drawn in surfaces and are not exact representations.

To access these files, please call us at 1.800.269.6533.

Specifications Exxon LL DPE LL 8555 Polyethylene Resin

Resin Properties	Typical Value	Units	Test Based On	Additional Information
Density	0.936	g/cm ³	ExxonMobil Method	<ul style="list-style-type: none">All physical properties were measured on 3mm rotomolded samples unless a different value is shown, except for ESCR, which was measured on compression molded samplesTensile testing was conducted at a crosshead speed of 50 mm/min. The tensile strength reported refers to the maximum stress reached during the testTest procedures may be modified to accommodate operating conditions or facility limitationsMeets FDA requirementsUV-stabilized
Melt Index (190°C/2.16kg)	6.8	g/10 min	ASTM D1238	
Thermal				
Deflection Temperature Under Load (DTUL) at 66psi - Unannealed	52	°C	ASTM D648	
Deflection Temperature Under Load (DTUL) at 264psi - Unannealed	36	°C	ASTM D648	
Peak Melting Temperature	126	°C	ASTM D3418	
Molded Properties				
Tensile Strength at Yield (50mm/minute)	16	MPa	ASTM D638	
Elongation at Yield (50mm/minute)	10	%	ASTM D638	
Flexural Modulus - 1% Secant	570	MPa	ASTM D790B	
Environmental Stress-Crack Resistance			ASTM D1693A	
10% Igepal, F50	50	hr		
100% Igepal, F50	>1000	hr		
Impact Strength				
-40°C, 3.18mm	80	J	ARM	
-40°C, 6.35mm	203	J		



A PLAYCORE Company

165 Stoneman Drive
Shallow Lake, Ontario, Canada

800.269.6533
spioplastics.com

