

Timber Edge

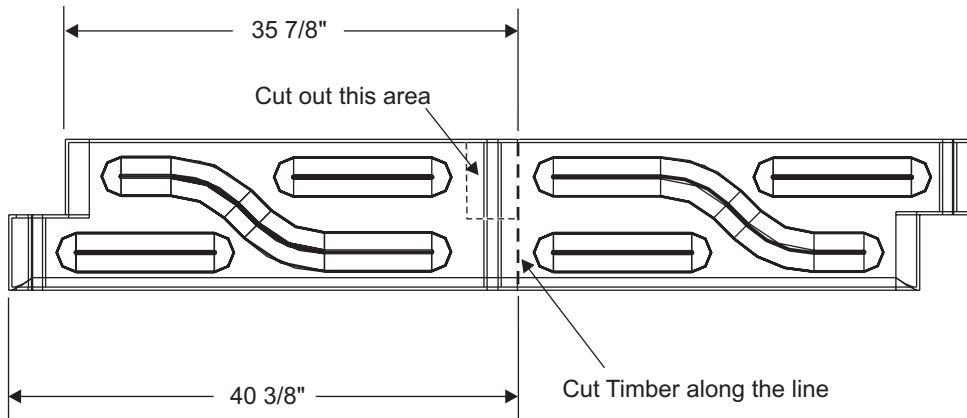
Supplied Parts: Timber Edge

Additional Parts Required: Hardware to be provided by the installer.

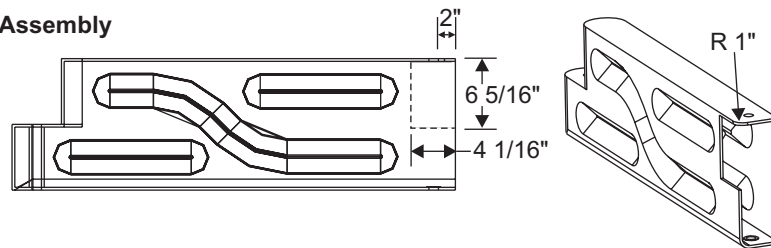
Method 1 — Shortening a Timber Edge when completing a corner —

Note: These illustrations are for example only.

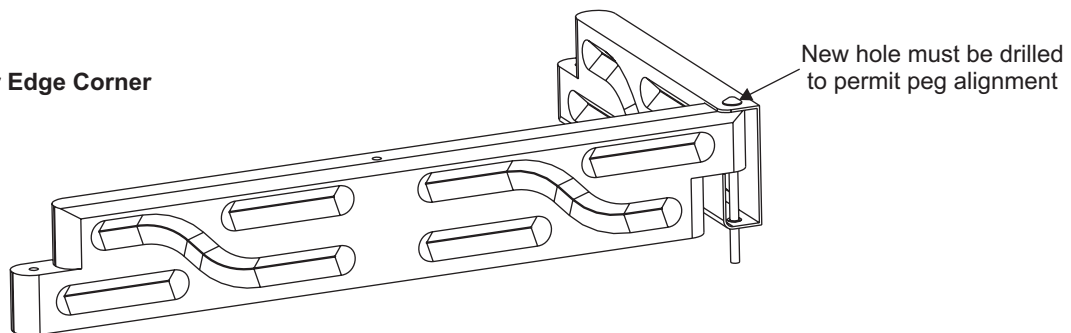
Full Size Timber



Cut Timber Prepared for Assembly



Assembled Timber Edge Corner



Installation Instructions



SPI Industries Inc., Shallow Lake, Ontario N0H 2K0

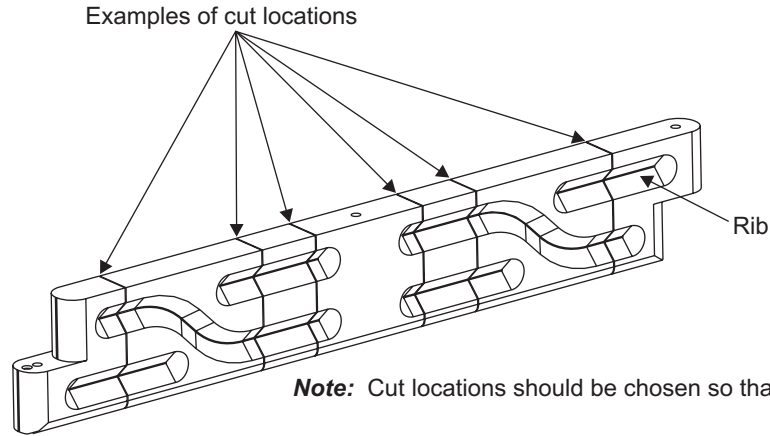
Tel: (519)935-2211 or (800)269-6533 Fax: (519)935-2174
Email: spi@spioplastics.com Internet: www.spioplastics.com

Timber Edge

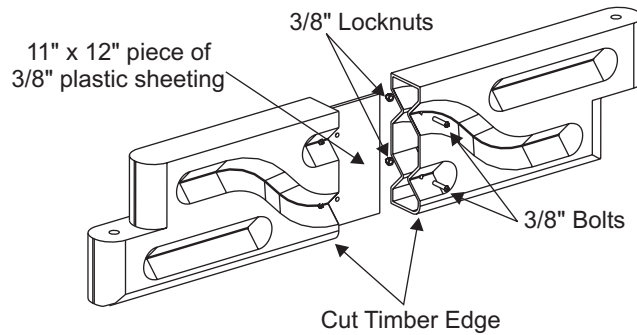
Method 2 — Shortening a Timber Edge when installing in a straight line —

Note: These illustrations are for example only.

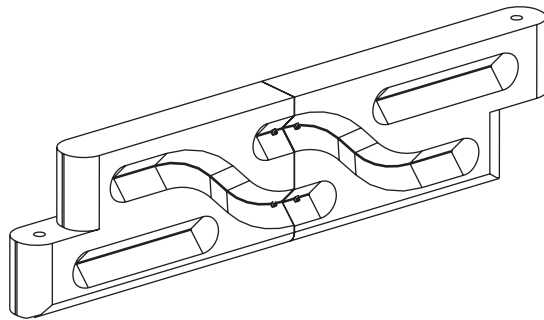
Full Size Timber



Cut Timber Prepared for Assembly



Assembled Timber Edge



SPI Industries Inc., Shallow Lake, Ontario N0H 2K0

Created: May 10, 2001

Tel: (519)935-2211 or (800)269-6533 Fax: (519)935-2174
Email: spi@spioplastics.com Internet: www.spioplastics.com