



PLAY

components

where kids want to play



RELIABILITY

PLAYABILITY

ACCESSORIES	1	CONTAINED PLAY	67
Adventure Table	2	Contained Play	68-70
Decks	3		
Funball	4		
Link™	5	HARDWARE	29
Log Roll	6	Playground Hardware	30
Riding Animals — 1 up	7	Swing Sets and Hardware	31
Riding Animals — 2 up	8		
Sneaker Keepers	8	PANELS	33
Steering Wheel	10	24" Panels	34
Stepping Stones	11	30" Panels	35
Timber Edge Products	12-13	Clear Bubbles	36
Decorative Timber	14		
		ROOFS	37
ACTIVITY PANELS	15	Cupola Roof	38
Alphabet Activity Panel	16	Dome Roof	39
Ball Turn Activity Panel	16	Gable Roof	40
C-Force Activity Panel	16	Hex Roof	41
Clock Activity Panel	16	4' Pyramid Roof	42
Driving Activity Panel	16	5' Pyramid Roof	42
Gear Activity Panel	16		
Gyro Spinner Activity Panel	16	SLIDES	43
Mirror Activity Panel	16	Deck Mounting System	44
Pinball Activity Panel	16	Curve Slides	46
Sign Language Activity Panel	16	Double Wall Slides	47
Space Maze Activity Panel	16	Double Wall Wave Slides	48
Tic-Tac-Dino Activity Panel	16	Sectional Slides - Starglide	49-54
Tic-Tac-Toe Activity Panel	17	Spiral Slide	55
Alarm Clock Panel	17	3' Triple Rails	56
		4' Triple Rail Wave Slide	57
CLIMBERS	19	5' Triple Rail Wave Slide	58
Cliff Hanger	20-21	Tube Slides	59-60
Dino-Mite™ Climber	22	Slide Hoods	45
Bedrock Climber	23		
Bedrock Climbing Wall	24-25		
Fredrock Climber	26		
Metal Climber	27		
Bike & Skate Park Components	28		

TUBES & COMPONENTS	61	APPENDIX	71
Elbows	62	Plastic Colors	72
Flanged Tube Exit	63	Polyethylene Resin Specifications	73
Transition Components	64	Warranty	74
24" Tubes	65	CAD Files & Images	74
30" Tubes	65		
Crawl Tube Assemblies	66		



Proud Members of





Adventure Table 2

Decks 3

Funball..... 4

Link™ 5

Log Roll..... 6

Riding Animals – 1 up 7

Riding Animals – 2 up 8

Sneaker Keepers..... 9

Steering Wheel.....10

Stepping Stones 11

Timber Edge Products 12-13

Decorative Timber14

ACCESSORIES



ACCESSORIES

Adventure Table



APPLICABLE FOR INDOOR AND OUTDOOR USE.

Consider for the child care market and additional indoor applications.



- A great miniature play landscape for mini cars and the popular finger toys, eg. skateboards/scooters
- ADA accessible
- Foundation for kids imaginative play
- A table filled with activities
- Every aspect of the table designed for play
- Suitable for boys and girls
- Ages 2-10
- Great for multiple children to play with at the same time
- 100% durable maintenance free one-piece polyethylene table
- No assembly

Description	Part #	Dimensions	Weight	NET Price
Adventure Table	ADV, TABLE	73½" l x 31" w x 32" h (186.9 cm x 78.7 cm x 75.2 cm)	75 lbs (34 kg)	\$215.00

Dimensions and weights are approximate. Prices subject to change without notice



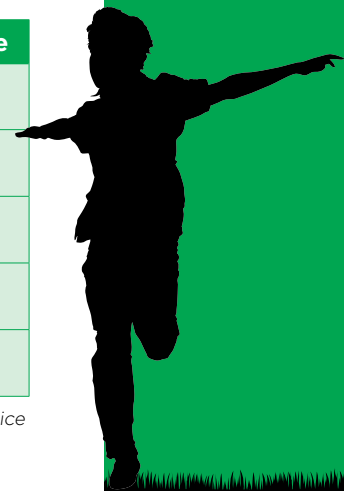
ACCESSORIES

Decks



Description	Part #	Dimensions	Weight	Retail Price
36" Square Deck	DECK3	36" l x 36" w x 3" h (91.4 cm x 91.4 cm x 7.6 cm)	30 lbs (13.6 kg)	\$168.00
36" Triangular Deck	DECK3, TRI	36" l x 36" w x 3" h (91.4 cm x 91.4 cm x 7.6 cm)	18 lbs (8.2 kg)	\$121.00
48" Square Deck	DECK4	48" l x 48" w x 3" h (121.9 cm x 121.9 cm x 7.6 cm)	50 lbs (22.3 kg)	\$243.00
48" Triangular Deck	DECK4, TRI	48" l x 48" w x 3" h (121.9 cm x 121.9 cm x 7.6 cm)	18 lbs (8.2 kg)	\$162.00
48" Pie Deck	DECK4, PIE	48" l x 48" w x 3" h (121.9 cm x 121.9 cm x 7.6 cm)	40 lbs (18.2 kg)	\$200.00

Dimensions and weights are approximate. Prices subject to change without notice



ACCESSORIES

Funball



- Designed for 3.5" (8.9 cm) o.d. pipe
- 3 exit points, 1 entry point
- A great addition to schools
- Shipped assembled

Please note the Funball is sized for regulation sized basketballs.

Note: Interior collar exists to accept pipe installation. Pipe is not included.



Description	Part #	Dimensions	Weight	Retail Price
Funball	FUNBALL	46" widest point x 33" tall (116.8 cm x 83.8 cm)	58 lbs (26.3 kg) plastic only	\$911.00

Dimensions and weights are approximate. Prices subject to change without notice



APPLICABLE FOR INDOOR AND OUTDOOR USE.

Consider for the child care market and additional indoor applications.



- Unlimited range of configurations and possibilities
- Utilizes pipe diameters from 1.25" - 3.5" (3.3 cm - 9.1 cm)
- 3 tier non skid surface. Stackable design
- Double value; an incline or decline configuration
- Designed with added structural strength features
- Drainage flow built into the design creating a product with no water pooling concerns
- Appropriate safety surfacing material required with installation
- A product allowing your imagination to soar!

Contact our team for **custom designs** and quotations.

800-269-6533

Description	Part #	Dimensions	Weight	Retail Price
The Link	LINK	42" l x 12" w x 14½" h (105.7 cm x 30.5 cm x 35.8 cm)	15 lbs (6.8 kg)	\$114.00

Dimensions and weights are approximate. Prices subject to change without notice



ACCESSORIES

Log Roll



APPLICABLE FOR INDOOR AND OUTDOOR USE.

Consider for the child care market and additional indoor applications.



- The Log Roll is a classic on the playground!
- The log rotates as the children step on it
- It has a non-skid surface
- A challenging and safe component

Description	Part #	Dimensions	Weight	Retail Price
Log Roll	LOGROLL	48" l x 16" diameter (122 cm x 40.6 cm diameter)	36 lbs (17.2 kg)	\$198.00

Dimensions and weights are approximate. Prices subject to change without notice



ACCESSORIES

Riding Animals (1 up)



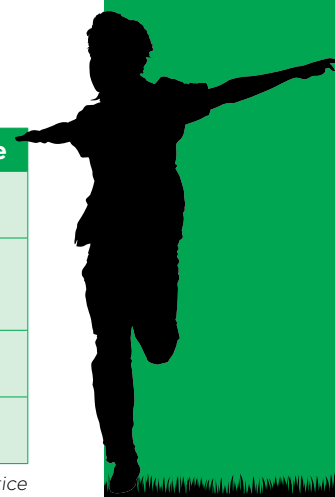
**APPLICABLE FOR
INDOOR AND
OUTDOOR USE.**

Consider for the child care market and additional indoor applications.

- Built park tough
- High impact resistance in a heavy wall design
- Smooth, rounded, gentle lines eliminates concerns of sharp protruding handles, corners and edges
- Ultraviolet inhibitors ensure long product life
- Non-skid foot rests
- Enclosed handle grips
- Maintenance free

Description	Part #	Dimensions	Weight	Retail Price
Frog Riding Animal (plastic only - no base)	RA,FR,N/B	35" l x 21" w x 23" h (89.9 cm x 53.3 cm x 58.4 cm)	33 lbs (15 kg)	\$235.00
Wally the Whale Riding Animal (plastic only - no base)	RA,WH,N/B	32" l x 19¾" w x 16" h (81.3 cm x 50.2 cm x 40.6 cm)	22 lbs (10 kg)	\$211.00
Spring Stand for Frog and Whale Riding Animal	RA,SPRING	19" l x 8" w x 8" h (48.3 cm x 20 cm x 20 cm)	31 lbs (14 kg)	\$275.00
Floor Mount Base Plate	HW,STAND,WH/FR	_____	13.5 lbs (6 kg)	\$92.00

Dimensions and weights are approximate. Prices subject to change without notice



ACCESSORIES

Riding Animals (2 up)



APPLICABLE FOR INDOOR AND OUTDOOR USE.

Consider for the child care market and additional indoor applications.



- Double riding animal for 1 or 2 children
- Built park tough
- High impact resistance in a heavy wall design
- Ultraviolet inhibitors ensure long product life
- Smooth, rounded, gentle lines eliminate concerns of sharp protruding handles, corners and edges
- Non-skid foot rests
- Enclosed handle grips
- Maintenance free

Description	Part #	Dimensions	Weight	Retail Price
Elephant Riding Animal (plastic only - no base)	RA,EL,N/B	39" l x 27" w x 29" h (99.1 cm x 68.6 cm x 73.7 cm)	45 lbs (20.4 kg)	\$421.00
Spring Hardware Kit for Elephant Riding Animal	RA,SPRING,EL	15¼" l x 15½" w x 19" h (38.7 cm x 39.4 cm x 48.3 cm)	100 lbs (45.4 kg)	\$728.00
Floor Mount Base Plate	HW,STAND,EL	—————	15 lbs (6.8 kg)	\$158.00

Dimensions and weights are approximate. Prices subject to change without notice

ACCESSORIES

Sneaker Keepers



- Horizontal and vertical applications
- Single tier application also available
- Select any colour per tier and cap
- Private label

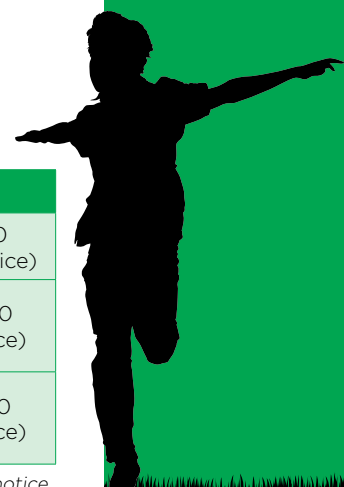
PLEASE CONTACT OUR
TEAM FOR DIFFERENT
CONFIGURATIONS

800-269-6533

www.spioutdoorplay.com

Description	Part #	Dimensions	Price
Single Component (6 openings)	SKS	53" l x 13" w x 14½" h (135 cm x 33 cm x 36 cm)	\$116.00 (Retail Price)
Vertical Sneaker Keeper (18 openings) 3 components + cap	SKS,3-TIER,VERT	60" l x 36" w x 20" h (152 cm x 91.5 cm x 51 cm)	\$407.00 (Net Price)
Horizontal Sneaker Keeper (18 openings) 3 components + cap	SKS,3-RISE	55" l x 13" w x 43" h (140 cm x 33 cm x 109 cm)	\$377.00 (Net Price)

Dimensions and weights are approximate. Prices subject to change without notice



ACCESSORIES

Steering Wheel



- Rotationally molded plastic designed with no openings
- Outside diameter is 13" (33 cm)
- Mounting hole under secure center cap

Description	Part #	Dimensions	Weight	Retail Price
Steering Wheel	SW	13" l x 13" w x 6" h (33 cm x 33 cm x 15.2 cm)	3 lbs (1.4 kg)	\$36.00

Dimensions and weights are approximate. Prices subject to change without notice



ACCESSORIES

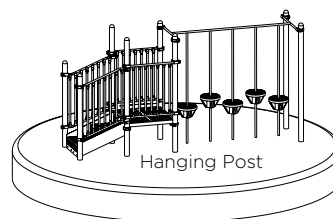
Stepping Stone



**APPLICABLE FOR
INDOOR AND
OUTDOOR USE.**

Consider for the child care market and additional indoor applications.

- Durable heavy duty polyethylene component
- Designed with non-skid surface
- Molded-in threaded inserts for secure attachments
- Can be mounted on the ground or hanging posts
- Add it to your play area in many configurations

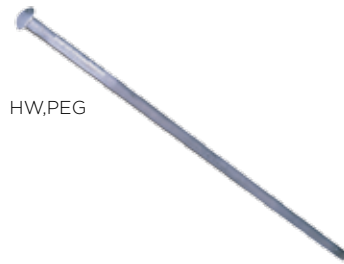


Description	Part #	Dimensions	Weight	Retail Price
Stepstone	STEPSTONE	14" l x 14" w x 8" h (35.6 cm x 35.6 cm x 20.3 cm)	5 lbs (2.3 kg)	\$71.00

Dimensions and weights are approximate. Prices subject to change without notice

ACCESSORIES

Timber Edge



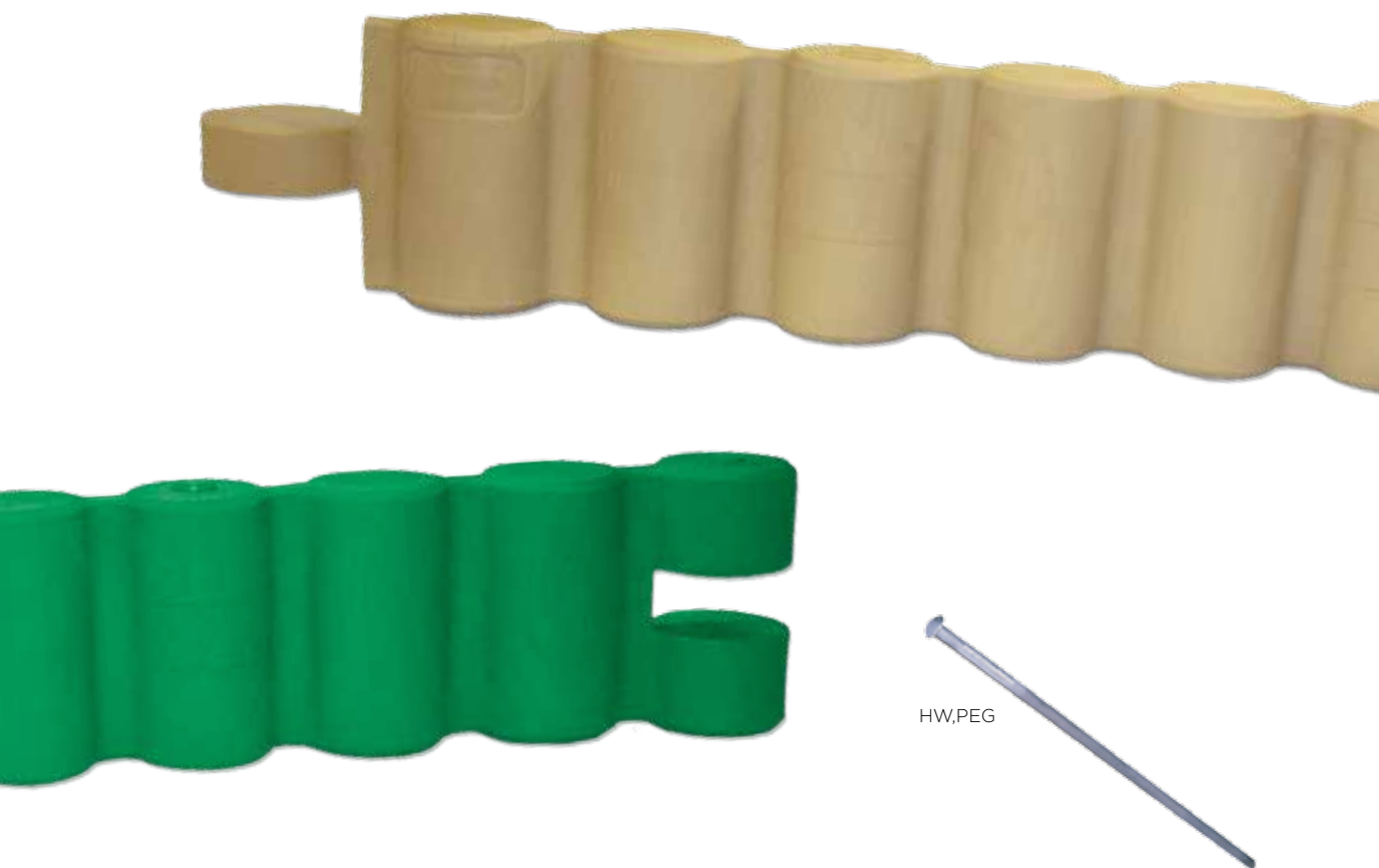
HW,PEG



- Pegs can be recessed below the top of the Timber for a clean, sleek look

Description	Part #	Dimensions	Weight	NET Price
Timber Edge — Recycled Black Resin	TIMEDGE,BK	78" l x 5½" w x 12" h (198 cm x 14 cm x 30.5 cm)	25 lbs (11.3 kg)	\$50.00
Timber Edge (Curved) — Recycled Black Resin	TIMEDGE,C	62" l x 5½" w x 12" h (157.5 cm x 14 cm x 30.5 cm)	18 lbs (8.2 kg)	\$54.00
2' Timber Edge — Recycled Black Resin	TIMEDGE,2	Installed Part 24" l x 5½" w x 12" h (61 cm x 14 cm x 30.5 cm) Actual Length of Part 29" (73.7 cm)	10 lbs (4.5 kg)	\$43.00
Timber Peg	HW,PEG	28" l x ¾" diameter (71 cm x 1.9 cm diameter)	1.25 lbs (0.6 kg)	\$11.00

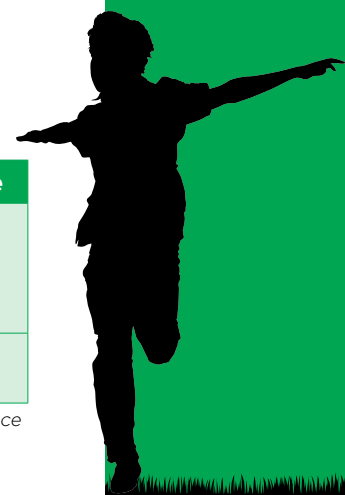
Dimensions and weights are approximate. Prices subject to change without notice



- **FLEXIBLE!** Landscape Timber
- Timber log texture
- This great product allows for flexibility. It can be installed from straight configurations to a circle configuration, hence the name "Flex Timber"
- Pegs are recessed below the top of the Flex Timber for a clean, sleek look

Description	Part #	Dimensions	Weight	NET Price
Flex Landscape Timber	TIMEDGE,FLEX	77" l x 6¼" w x 12" h (196 cm x 15.9 cm x 30.5 cm) 11½" (29 cm) between stake center to stake center holes - 4 stake holes per timber)	18 lbs (8.2 kg)	\$71.00
Timber Peg	HW,PEG	28" l x ¾" diameter (71 cm x 1.9 cm diameter)	1.25 lbs (0.6 kg)	\$11.00

Dimensions and weights are approximate. Prices subject to change without notice



ACCESSORIES

Decorative Timber Edge



Description	Part #	Dimensions	Weight	NET Price
Decorative Timber Edge	TIMEDGE,D	96" l x 10" w x 16" h (243.8 cm x 25.4 cm x 40.6 cm)	25 lbs (11.3 kg)	\$92.00

Dimensions and weights are approximate. Prices subject to change without notice



Alphabet Activity Panel.....	16
Ball Turn Activity Panel.....	16
C-Force Activity Panel	16
Clock Activity Panel	16
Driving Activity Panel.....	16
Gear Activity Panel	16
Gyro Spinner Activity Panel	16
Mirror Activity Panel.....	16
Pinball Activity Panel.....	16
Sign Language Activity Panel	16
Space Maze Activity Panel.....	16
Tic-Tac-Dino Activity Panel.....	16
Tic-Tac-Toe Activity Panel.....	17
Alarm Clock	17

ACTIVITY PANELS



ACTIVITY PANELS



AC,ABC



AC,BALLTURN



AC,CFORCE



AC,CLOCK



AC,DRIVING



AC,GEARS



AC,GYRO



AC,MIRROR



AC,PINBALL



AC,SIGNLANGUAGE



AC,SPACEMAZE



AC,TIC-TAC-DINO





AC,ALARMCLOCK



AC,TIC-TAC-TOE

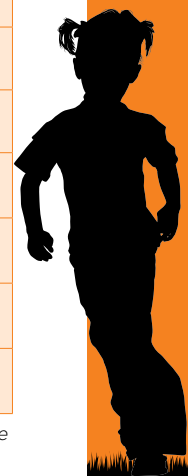
**APPLICABLE FOR
INDOOR AND
OUTDOOR USE.**

Consider for the child care market and additional indoor applications. Wall mount or Floor mount options available.

- Activity Panels add to any playground
- Bright, bold colours

Description	Part #	Dimensions	Weight	Retail Price
Alarm Clock Panel	AC,ALARMCLOCK	2.5" x 32.5" x 49.25" (6.4 cm x 82.5 cm x 125 cm)	42 lbs (19 kg)	\$569.00
Alphabet Activity Panel	AC,ABC	43" x 41" x 3" (109 cm x 104 cm x 7.6 cm)	25 lbs (11.3 kg)	\$642.00
Ball Turn Activity Panel	AC,BALLTURN	43" x 41" x 5" (109 cm x 104 cm x 12.7 cm)	25 lbs (11.3 kg)	\$829.00
C-Force Activity Panel	AC,CFORCE	43" x 41" x 5" (109 cm x 104 cm x 12.7 cm)	30 lbs (13.6 kg)	\$1,187.00
Clock Activity Panel	AC,CLOCK	43" x 41" x 5" (109 cm x 104 cm x 12.7 cm)	30 lbs (13.6 kg)	\$1,144.00
Driving Activity Panel	AC,DRIVING	43" x 41" x 8" (109 cm x 104 cm x 20.3 cm)	30 lbs (13.6 kg)	\$700.00
Gear Activity Panel	AC,GEARS	43" x 41" x 5" (109 cm x 104 cm x 12.7 cm)	30 lbs (13.6 kg)	\$1,144.00
Gyro Spinner Activity Panel	AC,GYRO	43" x 41" x 5" (109 cm x 104 cm x 12.7 cm)	25 lbs (11.3 kg)	\$829.00
Mirror Activity Panel	AC,MIRROR	43" x 41" x 3" (109 cm x 104 cm x 7.6 cm)	25 lbs (11.3 kg)	\$642.00
Pinball Activity Panel	AC,PINBALL	43" x 41" x 5" (109 cm x 104 cm x 12.7 cm)	30 lbs (13.6 kg)	\$829.00
Sign Language Activity Panel	AC,SIGNLANGUAGE	43" x 41" x 3" (109 cm x 104 cm x 7.6 cm)	25 lbs (11.3 kg)	\$759.00
Space Maze Activity Panel	AC,SPACEMAZE	43" x 41" x 3" (109 cm x 104 cm x 7.6 cm)	25 lbs (11.3 kg)	\$642.00
Tic-Tac-Toe Activity Panel	AC,TIC-TAC-TOE	43" x 41" x 8" (109 cm x 104 cm x 20.3 cm)	35 lbs (15.9 kg)	\$555.00
Tic-Tac-Toe Dinosaur Activity Panel	AC,TIC-TAC-DINO	43" x 41" x 8" (109 cm x 104 cm x 20.3 cm)	35 lbs (15.9 kg)	\$555.00
Tic-Tac-Toe 9 Piece Set	TTT9R	Box Dimensions 22" x 22" x 10" (55.9 cm x 55.9 cm x 25.4 cm)	15 lbs (6.8 kg)	\$236.00
Tic-Tac-Toe Dinosaur 9 Piece Set	TTD9	Box Dimensions 22" x 22" x 10" (55.9 cm x 55.9 cm x 25.4 cm)	15 lbs (6.8 kg)	\$252.00

Dimensions and weights are approximate. Prices subject to change without notice





CLIMBERS

Cliff Hanger.....	20-21
Dino-Mite™ Climber.....	22
Bedrock Climber	23
Bedrock Climbing Wall.....	24-25
Fredrock Climber	26
Metal Climbers.....	27
Bike & Skate Park Components	28

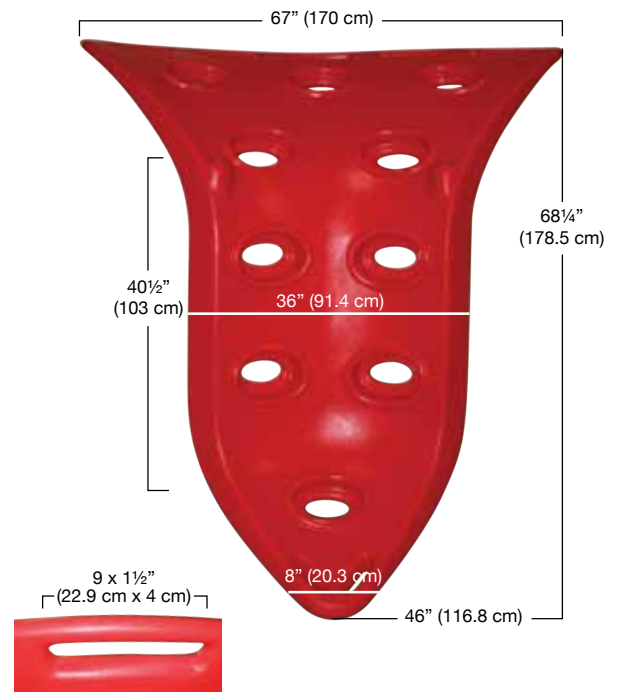


CLIMBERS

Cliff Hanger



- The Cliff Hanger Climber simulates the challenge of over hanging cliff
- What a great work out for older children who have the strength and dexterity to conquer the challenge
- The opposite side provides easy access for younger children to make a quick climb to the top
- The over hang also provides a great hand over hand upper body strength challenge
- Use one or many to create original and interesting climbing walls
- Add your own steel ladders, climbers, etc. between units to create amazing futuristic structures



Description	Part #	Dimensions	Weight	Retail Price
Cliff Hanger	CLIFFHANGER	67" widest point 8" smallest point x 68 1/4" l (170 cm x 20 cm x 173.5 cm)	100 lbs (45.4 kg)	\$578.00

Dimensions and weights are approximate. Prices subject to change without notice





SINGLE CLIMBER



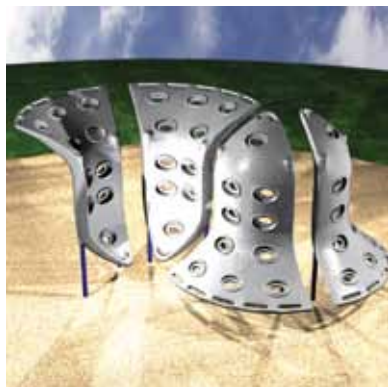
BELL CLIMBER



MOUNTED BELL



CLIMBING CENTRE



CLIMBING WALL



LAUNCH PAD



TULIP CLIMBER



MOUNTED TULIP



UP/DOWN CLIMBER

MOUNTING:

1. Use 3½" (9 cm) or smaller diameter pipes inside *or*
2. Bracket to outside vertical mounting area

NOTE: Pipe is not included.



- When mounted vertically the Cliff Hanger does not create a standing surface (greater than 30° angle or decline)
- Tested with 500 lbs. (226.8 kg) hanging from the over hanging cliff
- Futuristic shape and design
- There are many configurations you can make using the Cliff Hanger. These are just ideas to get your creative juices flowing.



CLIMBERS

Dino-Mite™ Climber



- Can be used for 5' and 6' deck installations
- No secondary components required
- Variety of step profiles for climbing
- Both sides of the Dino-Mite™ Climber are different allowing for added interest and face-to-face installs
- Molded in handrails
- Multiple climbing methods
- Challenging for children of all ages
- Appealing and playground enhancing
- Realistic dinosaur appearance; great textures
- A play innovation with fun yet realistic qualities
- Easy one-piece installation

Description	Part #	Dimensions	Weight	Retail Price
Dino-Mite™ Climber	DINO6	62" l x 34" w x 90" h (157.5 cm x 86.4 cm x 228.6 cm)	175 lbs (79.4 kg)	\$1,400.00

Dimensions and weights are approximate. Prices subject to change without notice



CLIMBERS

Bedrock Climber



APPLICABLE FOR INDOOR AND OUTDOOR USE.

Consider for the child care market and additional indoor applications.

- Brings simulated rock climbing to the playground
- Easily installed with 4 ft. (1.2 m) or 5 ft. (1.5 m) deck heights
- Easy climb foot recesses and raised hand holds
- Unique recreational concept

Description	Part #	Dimensions	Weight	Retail Price
Bedrock Climber	BRC	66" l x 36" w x 6" d (167.6 cm x 91.4 cm x 15.2 cm)	64 lbs (29 kg)	\$340.00
Bedrock Cap	BRC,CAP	68½" l x 6" w x 6" d (174 cm x 15.2 cm x 15.2 cm)	12 lbs (5.4 kg)	\$93.00
Climbing Rock Hold	CRH	Set of 4 - Blue	—	\$119.00

Dimensions and weights are approximate. Prices subject to change without notice



CLIMBERS

Bedrock Climbing Wall



APPLICABLE FOR INDOOR AND OUTDOOR USE.

Consider for the child care market and additional indoor applications.



- Simulated rock climbing
- The Bedrock Climber Cap reduces top dimension to a non-standing surface
- Recesses in the wall are provided for assembly hardware. No hardware protrusions in the wall
- The Bedrock Climbing Wall promotes an active play environment meeting the needs of child development while providing exceptional play value!
- A great stand alone play activity or designed into a play structure

- Easy climb foot recesses and raised hand holds
- Children can climb vertically and horizontally
- Unlimited design possibilities, your imagination the key!

Note: All Bedrock Climbing Walls must be installed with an impact absorbing surface acceptable to your playground standards

Contact our team for customized designs and pricing.

800-269-6533 · www.spioplastics.com



OPTION 1 **TWIST 'N' TURN WALL**

The Twist 'n Turn Wall can be used in many configurations



OPTION 2 **S-BEND TWIST 'N TURN WALL**

From the Twist 'n Turn wall you can create the S-Bend

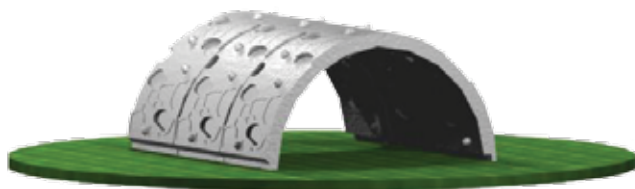


OPTION 3 **OVER & UNDER (A TROLL'S HIDEAWAY)**

A mini bridge module from the outside, cave-like inside

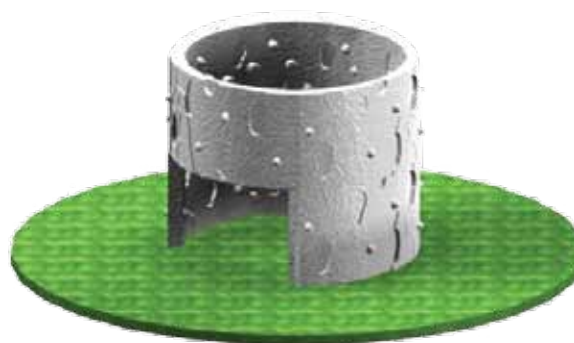
Allows for climbing over and under the structure

This structure allows both passive and active play. One moment you can be in a cave, then a castle draw bridge to a troll's hideaway. Imagination is the only limit!



OPTION 4 **JUNIOR CASTLE**

Junior Castle for those climbing expeditions that are a little more adventurous. Children can climb on the inside or the outside of the unit



OPTION 5 **TODDLER CASTLE**

Toddler Castle available for those unique areas

Large access for parental supervision and guidance



Climbing fun for children of all ages!

All Bedrock Climbing Walls must be installed with an impact absorbing surface acceptable to your playground standards



CLIMBERS

Fredrock Climber

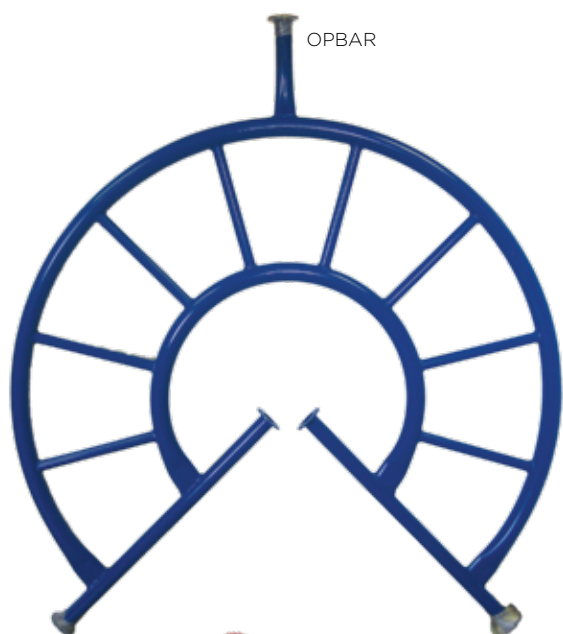


- The Fredrock climber has many features! It can be installed on a 4 ft. (1.2 m) or 5 ft. (1.5 m) deck height simply by turning the wall from one end to the other
- On the climbing surface there are a variety of protruding geometric shapes with recognizable universal symbols, eg. stars, numbers
- On the underside of the climber is another great game! Children follow the path of their favourite animals' foot prints
- The overall features of this climber are: versatility, educational aspects, ease of climb, rounded edges for childrens' safety and visual appeal

Description	Part #	Dimensions	Weight	Retail Price
The Fredrock Climber	FRC	78½" l x 44¾" w x 7" d (199.4 cm x 113.7 cm x 17.8 cm)	80 lbs (36.3 kg)	\$512.00

Dimensions and weights are approximate. Prices subject to change without notice

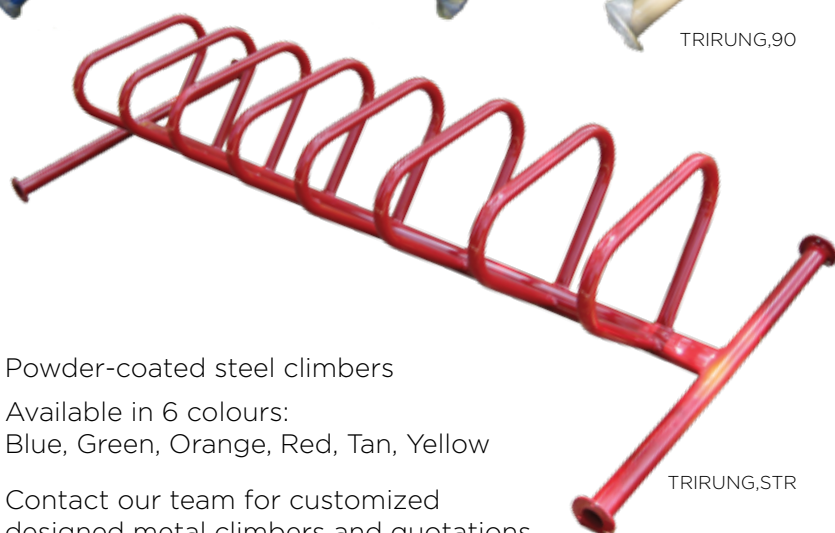




OPBAR



TRIRUNG,90



TRIRUNG,STR



CLOVERCLIMB

- Powder-coated steel climbers
- Available in 6 colours:
Blue, Green, Orange, Red, Tan, Yellow

Contact our team for customized designed metal climbers and quotations.

800-269-6533

Description	Part Name	Retail Price
Clover Climber	CLOVERCLIMB	\$675.00
Clover Climber with Gate	CLOVERCLIMB,W/G	\$1,303.00
Tree Climber	TREECLIMB	\$427.00
Tree Climber with Gate	TREECLIMB,W/G	\$1,102.00
90° Tri-Rung Overhead Climber	TRIRUNG,90	\$889.00
Straight Tri-Rung Overhead Climber	TRIRUNG,STR	\$771.00
Fireman's Sliding Pole	FIREPOLE	\$164.00
Fireman's Sliding Pole with Gate	FIREPOLE,W/G	\$888.00
Overhead Parallel Bar	OPBAR	\$493.00
90° Double Parallel Bar	DPBAR,90	\$556.00
C-Grab Handle	CGRAB	\$90.00
Orbital Climber	ORBITAL,270	\$1,138.00

Dimensions and weights are approximate. Prices subject to change without notice



CLIMBERS

Bike & Skate Park Components



- Powder-coated steel benches and rails, ideal for skate and bike parks

Contact our team for custom designed metal rails and benches.

800-269-6533

Description	Part #	Dimensions	Retail Price
8' Straight Bench	SKATE,BENCH	8' Long	\$632.00
10' Straight Rail	SKATE,RAIL,STR	10' Long	\$474.00
8' Kinked Rail	SKATE,RAIL,KINK	8' Long	\$474.00

Dimensions and weights are approximate. Prices subject to change without notice



Playground Hardware 30

Swing Seats & Hardware 31

HARDWARE



HARDWARE

Playground Hardware



Description	Part #	Res/Com	Colour	Weight	Retail Price
S-Hook Tool	A04	C		15 lbs (6.8 kg)	\$395.00
Triangular Trapeze Ring	A06R	R	Yellow	0.2 lbs (0.09 kg)	\$18.00
3/8" Galvanized Large Loop S Hook	H14	C		4 oz (113.4 g)	\$3.00
Tube to Panel Hardware	HW,T2P	C		n/a	\$6.00
Tube to Tube Hardware	HW,T2T	C		n/a	\$4.00
Galvanized Ductile Iron Swing Hanger for Wood Beam	SH04	C		2 lbs (0.9 kg)	\$27.00
Galvanized Ductile Iron Swing for 2 3/8" o.d. Steel Pipe	SH09	C		2.8 lbs (1.3 kg)	\$39.00
Galvanized Ductile Iron Swing for 3 1/2" o.d. Steel Pipe	SH10	C		4 lbs (1.8 kg)	\$50.00
Replacement Pendulum for S04, SH09, SH10	SH11	C		0.3 lbs (0.12 kg)	\$16.00
1/4" Toggle Bolt	HW,TOGGLE	R/C		0.89 oz (25 g)	\$5.00
3/8" Toggle Nut (not including bolt & washer)	HW,TOGGLE3/8	R/C		n/a	\$5.00

Dimensions and weights are approximate. Prices subject to change without notice



HARDWARE

Swing Seats & Hardware



S02



S16



Description	Part #	Res/Com	Colour	Weight	Retail Price
Belt Seat with Steel Core	S02	C	All Colours	3.5 lbs (1.6 kg)	\$50.00
360 Buckle Seat with Steel Insert	S16	C	Black, Blue	8 lbs (3.6 kg)	\$168.00

Dimensions and weights are approximate. Prices subject to change without notice





PANELS

24" Panels	34
30" Panels.....	35
Activity Panel.....	35
Flat Panel.....	35
Bubble Panel.....	35
Ventilation Panel	35
Flanged Panel.....	35
Ramp Panel	35
Bubbles	36



PANELS 24" Panels



BP24C/BP30C

- Panels add colour
- They create attractive safety enclosures for structures
- Provide safe entry into a tube slide or crawl tube
- Recessed on both sides
- Chamfered edges



P24,2002

Description	Part #	Dimensions	Hole Diameter	Weight	Retail Price
Clear Bubble mounted in Flat Panel with Rivets	BP24C	39" x 31" x 10" (99 cm x 78.8 cm x 25.4 cm)	24" (61 cm)	20 lbs (9.1 kg)	\$369.00
Flat Panel (round opening)	P24,2002	39" x 31" x 3" (99 cm x 78.8 cm x 7.6 cm)	24" (61 cm)	15 lbs (9.1 kg)	\$120.00

Dimensions and weights are approximate. Prices subject to change without notice



PANELS

30" Panels



ACTP,2002



FS,SP5



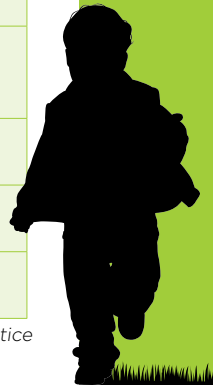
FP30,2002



P30

Description	Part #	Dimensions	Hole Diameter	Weight	Retail Price
Activity Panel (no activity)	ACTP,2002	43" x 41" x 2½" (109 cm x 104 cm x 6.4 cm)	28½" x 28½" (72.4 cm x 72.4 cm)	20 lbs (9.1 kg)	\$142.00
Clear Bubble mounted in Flat Panel with Rivets	BP30C	43" x 41" x 10" (109 cm x 104 cm x 25.4 cm)	30" (76.2 cm)	20 lbs (9.1 kg)	\$438.00
Flat Panel (round opening)	FP30,2002	43" x 41" x 3" (109 cm x 104 cm x 7.6 cm)	30" (76.2 cm)	20 lbs (9.1 kg)	\$128.00
Ventilation Panel	FS,SP5	43" x 41" x 3" (109 cm x 104 cm x 7.6 cm)	n/a	20 lbs (9.1 kg)	\$142.00
Flanged Panel	P30	43" x 41" x 8" (109 cm x 104 cm x 20.3 cm)	30" (76.2 cm)	20 lbs (9.1 kg)	\$134.00

Dimensions and weights are approximate. Prices subject to change without notice



PANELS

Bubbles



- Bubbles provide play value to any playground

Description	Part #	Dimensions	Weight	Retail Price
24" Clear Bubbles	B24,CL	24" (61 cm) diameter 28" x 28" x 10" rise (71 cm x 71 cm x 25 cm rise)	5 lbs (2.3 kg)	\$199.00
30" Clear Bubbles	B30,CL	30" (76.2 cm) diameter 35" x 35" x 10" rise (89 cm x 89 cm x 25 cm rise)	7 lbs (3.2 kg)	\$252.00

Dimensions and weights are approximate. Prices subject to change without notice



ROOFS

Cupola Roof.....	38
Dome Roof.....	39
Gable Roof	40
Hex Roof.....	41
4' Pyramid Roof.....	42
5' Pyramid Roof.....	42



ROOFS

Cupola Roof



Description	Part #	Dimensions	Weight	Retail Price
Cupola Roof	CUPOLAROOF	70" l x 70" w x 44" h (178 cm x 178 cm x 112 cm)	132 lbs (60 kg)	\$649.00

Dimensions and weights are approximate. Prices subject to change without notice





- Sleek, modern design
- No standing surfaces
- Suitable for 4' and 5' platforms
- Adjustable mounting corners

Description	Part #	Dimensions	Weight	Retail Price
5' Dome Roof	DOMEROOF	72½" l x 72½" w x 37½" h (184.1 cm x 184.1 cm x 95.3 cm)	110 lbs (49.9 kg)	\$592.00

Dimensions and weights are approximate. Prices subject to change without notice



ROOFS

Gable Roof

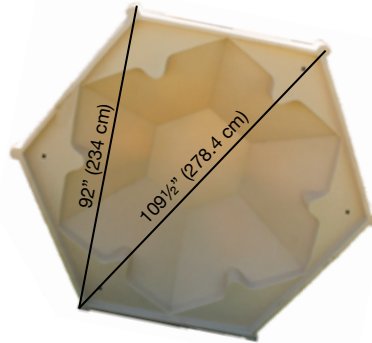


- This roof is sleek and designed to add that extra class to your playground
- Easily installed
- Provides a fun design and theme to your play structure

Description	Part #	Dimensions	Weight	Retail Price
Gable Roof	GABLEROOF	56" l x 54¾" w x 27" h (1.4 m x 1.4 m x 0.7 m)	65 lbs (29.5 kg)	\$756.00

Dimensions and weights are approximate. Prices subject to change without notice





- Double walled roof
- Sleek design
- No standing surfaces
- Suitable for hexagonal platforms

and other large decks

- Six (6) mounting points on a 36" radius and 60° between mounting points

Description	Part #	Dimensions	Weight	Retail Price
8' Hex Roof	PR8	Outside: 109½" x 109½" x 39¾" h (278.4 cm x 278.4 cm x 101 cm) Inside: 92" x 92" (234 cm x 234 cm)	170 lbs (77 kg)	\$1,512.00

Dimensions and weights are approximate. Prices subject to change without notice



ROOFS

Pyramid Roof



PR4,2002



PR5,DW

- Pyramid Roofs — classic style, traditional look

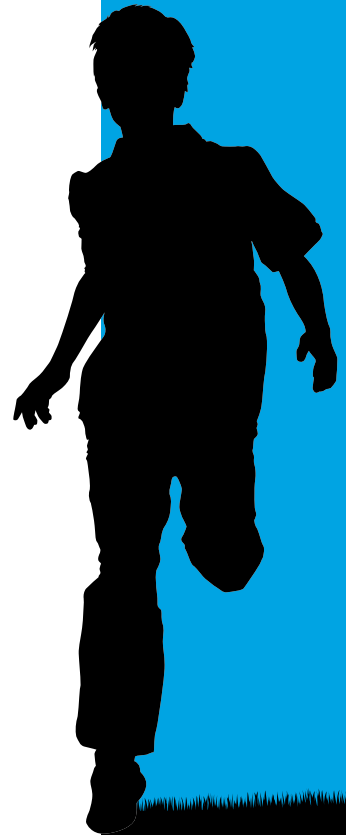


Description	Part #	Dimensions	Weight	Retail Price
4' Pyramid Roof	PR4,2002	53½" l x 53½" w x 23" h (135.9 cm x 135.9 cm x 58.5 cm)	60 lbs (27.3 kg)	\$330.00
5' Pyramid Roof	PR5,DW	60" l x 60" w x 22" h (152.4 cm x 152.4 cm x 55.9 cm)	80 lbs (36.3 kg)	\$491.00

Dimensions and weights are approximate. Prices subject to change without notice

SLIDES

Deck Mounting System	44
Curve Slides	46
Double Wall Slides	47
Double Wall Wave Slides	48
Sectional Slides – Starglide	49-54
Spiral Slide	55
3' Triple Rail Slides	56
4' Triple Rail Wave Slide	57
5' Triple Rail Wave Slide	58
Tube Slides	59-60
Slide Hoods	45



SLIDES

Deck Mounting System



The face of the slide has a 1° draft to ensure the top of the slide face contacts the face of the deck first. When the hardware is installed the top of the slide face is pulled tightly against the face of the deck.

List of slides with 1° draft:

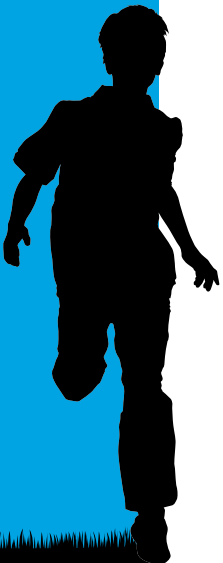
- | | |
|--------------------------|---|
| 3' Flat Slide (3DWFS) | 5' Curve Slide (5CURVED) |
| 4' Flat Slide (4DWFS) | 6' Spiral Slide (SS6,HP) |
| 4' Curve Slide (4CURVED) | All Starglide Hoods & Starglide Single Entrance |
| 5' Flat Slide (5DWFS) | |



The face of the slide is concave. When placed against the face of the deck this causes the outer edges of the slide to contact the face of the deck first. By installing the centre mounting bolts first the outer edges of the slide are pressed tightly against the face of the deck.

List of slides with concave face:

- | | |
|-----------------------------|-----------------------------|
| 2' Flat Slide (2DWFS) | 4' Wave Slide (4DWWS) |
| 3' Curve Slide (3CURVED,N) | 5' Triple Rail Slide (5TRS) |
| 3' Triple Rail Slide (3TRS) | 5' Wave Slide (5DWWS) |
| 4' Triple Rail Slide (4TRS) | 6' Wave Slide (6DWWS,2002) |



SLIDES

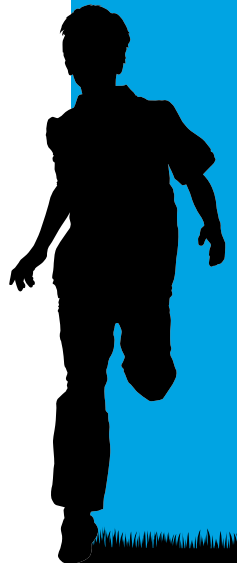
Slide Hoods



- Great sleek designs
- Slide hoods help to prevent children from standing on the slide

Description	Part #	Dimensions	Weight	Retail Price
Double Wall Slide Hood	DWFS,HOOD	40" l x 38" h x 16" d (101.6 cm x 96.5 cm x 40.6 cm)	28 lbs (13 kg)	\$140.00
Double Wall Slide Hood (36")	DWFS,HOOD36	36" l x 44" h x 15" d (91.4 cm x 112 cm x 38.1 cm)	30 lbs (14 kg)	\$246.00
Triple Rail Slide Hood	TRS,HOOD	45" l x 30" h x 16" d (114.3 cm x 76.2 cm x 40.6 cm)	27 lbs (12.3 kg)	\$152.00
Triple Rail Slide Hood (48")	TRS,HOOD48	48" l x 33" h x 14½" d (101.6 cm x 96.5 cm x 40.6 cm)	25 lbs (11.3 kg)	\$263.00

Dimensions and weights are approximate. Prices subject to change without notice



SLIDES

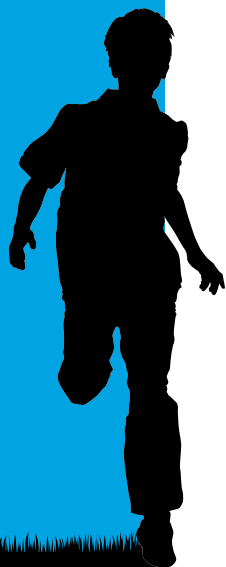
Curved Slide



- One piece commercial slides with built-in level entrance and elevated molded exit
- No seams! No joints! Eliminates concerns of potential string entrapment
- Molded-in foot

Description	Part #	Deck Height	Width	Bed Width	Length	Weight	Retail Price
3' - 90° Curved Slide	3CURVED,N	36" (91.4 cm)	24" (61 cm)	18" (91.4 cm)	77" (195.6 cm)	60 lbs (27 kg)	\$421.00
4' Curved Slide	4CURVED	48" (121.9 cm)	24" (61 cm)	18" (91.4 cm)	111" (292 cm)	90 lbs (41 kg)	\$691.00
5' Curved Slide	5CURVED	60" (152.4 cm)	24" (61 cm)	18" (91.4 cm)	130" (330.2 cm)	110 lbs (50 kg)	\$846.00

Dimensions and weights are approximate. Prices subject to change without notice



SLIDES

Double Wall Slide



- One piece commercial slides with built-in level entrance and elevated molded exit
- No seams! No joints! Eliminates concerns of potential string entrapment
- Molded-in foot



Description	Part #	Deck Height	Width	Bed Width	Length	Weight	Retail Price
2' Double Wall Slide	2DWFS	24" (61 cm)	24" (61 cm)	17" (43.2 cm)	58" (147.3 cm)	40 lbs (18.2 kg)	\$238.00
3' Double Wall Slide	3DWFS	36" (91.4 cm)	23½" (59.7 cm)	17½" (44.5 cm)	90" (228.6 cm)	60 lbs (27.2 kg)	\$306.00
4' Double Wall Slide	4DWFS	48" (121.9 cm)	23½" (59.7 cm)	17½" (44.5 cm)	116" (294.6 cm)	75 lbs (34 kg)	\$394.00
5' Double Wall Slide	5DWFS	60" (152.4 cm)	23½" (59.7 cm)	17½" (44.5 cm)	132" (335.3 cm)	100 lbs (45.4 kg)	\$501.00

Dimensions and weights are approximate. Prices subject to change without notice



SLIDES

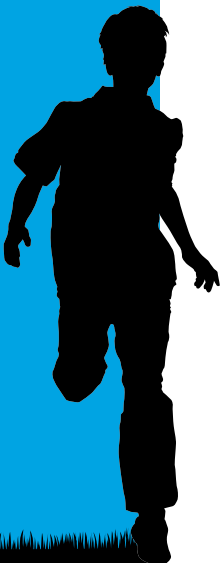
Double Wall Wave Slide



- Radius bedway
- Extra large rounded exit and entrance corners provide added strength and safety
- Molded-in foot
- Slide deck height stamped into foot for ease of recognition

Description	Part #	Deck Height	Width	Bed Width	Length	Weight	Retail Price
4' Double Wall Wave Slide	4DWWS	48" (122 cm)	24" (61 cm)	17" (43.2 cm)	108" (274.3 cm)	85 lbs (38.5 kg)	\$429.00
5' Double Wall Wave Slide	5DWWS	60" (152.4 cm)	24" (61 cm)	17" (43.2 cm)	128" (325.1 cm)	90 lbs (40.8 kg)	\$528.00
6' Double Wall Wave Slide	6DWWS,2002	72" (183 cm)	24½" (62.2 cm)	17½" (44.5 cm)	145" (368.3 cm)	130 lbs (59 kg)	\$629.00

Dimensions and weights are approximate. Prices subject to change without notice



SLIDES

Starglide Sectional Slide



SG,6VEER,LEFT



SG,5TBS,VSV

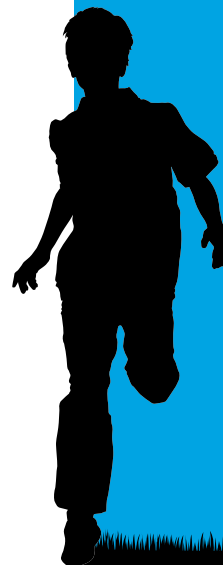


SG,7W

You will find the single and triple bed configuration specifications charts on the following pages.

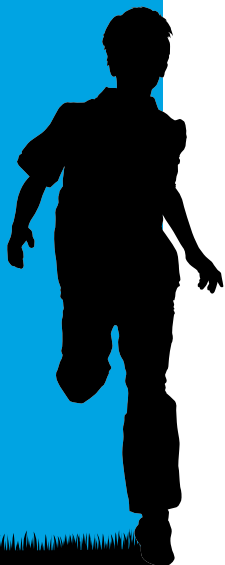
NOTE: An intermediate support, is required for slides 6' (1.83 m) and taller, included.

Please contact us for Custom Slide Options.
800-269-6533 · www.spiplastics.com



SLIDES

Starglide Sectional Slide



SINGLE BED SLIDE CONFIGURATIONS INCLUDE				
Description	Part #	Includes	Weight	Retail Price
Starglide 3' Straight	SG,3STR	1 - SG,ENTRANCE; 1 - SG,EXIT; 1 - SG,HARDWARE	104 lbs (47.2 kg)	\$985.00
Starglide 3' Straight Open Entrance	SGO,3STR	1 - SGO,ENT; 1 - SG,EXIT; 1 - SG,HARDWARE	79 lbs (35.9 kg)	\$822.00
Starglide 4' Straight	SG,4STR	1 - SG,ENTRANCE; 1 - SG,STRAIGHT; 1 - SG,EXIT; 2 - SG,HARDWARE	122 lbs (55.3 kg)	\$1,280.00
Starglide 4' Straight Open Entrance	SGO,4STR	1 - SGO,ENT; 1 - SG,STRAIGHT; 1 - SG,EXIT; 2 - SG,HARDWARE	97 lbs (44 kg)	\$1,117.00
Starglide 5' Straight	SG,5STR	1 - SG,ENTRANCE; 1 - SG,STR,DOUBLE; 1 - SG,EXIT; 2 - SG,HARDWARE	137.5 lbs (62.4 kg)	\$1,387.00
Starglide 5' Straight Open Entrance	SGO,5STR	1 - SGO,ENT; 1 - SG,STR,DOUBLE; 1 - SG,EXIT; 2 - SG,HARDWARE	112.5 lbs (51.1 kg)	\$1,224.00
Starglide 5' Wave	SG,5W	1 - SG,ENTRANCE; 1 - SG,WAVE; 1 - SG,EXIT; 2 - SG,HARDWARE	137.5 lbs (62.4 kg)	\$1,387.00
Starglide 5' Wave Open Entrance	SGO,5W	1 - SGO,ENT; 1 - SG,WAVE; 1 - SG,EXIT; 2 - SG,HARDWARE	112.5 lbs (51.1 kg)	\$1,224.00
Starglide 5' Veer Left	SG,5VEER,L	1 - SG,ENTRANCE; 1 - SG,TURN,LEFT; 1 - SG,EXIT; 2 - SG,HARDWARE	137.5 lbs (62.4 kg)	\$1,387.00
Starglide 5' Veer Left Open Entrance	SGO,5VEER,L	1 - SGO,ENT; 1 - SG,TURN,LEFT; 1 - SG,EXIT; 2 - SG,HARDWARE	112.5 lbs (51.1 kg)	\$1,224.00
Starglide 5' Veer Right	SG,5VEER,R	1 - SG,ENTRANCE; 1 - SG,TURN,RIGHT; 1 - SG,EXIT; 2 - SG,HARDWARE	137.5 lbs (62.4 kg)	\$1,387.00
Starglide 5' Veer Right Open Entrance	SGO,5VEER,R	1 - SGO,ENT; 1 - SG,TURN,RIGHT; 1 - SG,EXIT; 2 - SG,HARDWARE	112.5 lbs (51.1 kg)	\$1,224.00
Starglide 6' Straight	SG,6STR	1 - SG,ENTRANCE; 1 - SG,STR,DOUBLE; 1 - SG,STRAIGHT; 1 - SG,EXIT; 1 - SG,SUPPORT; 3 - SG,HARDWARE	172 lbs (78 kg)	\$1,774.00
Starglide 6' Straight Open Entrance	SGO,6STR	1 - SGO,ENT; 1 - SG,STR,DOUBLE; 1 - SG,STRAIGHT; 1 - SG,EXIT; 1 - SG,SUPPORT; 3 - SG,HARDWARE	147 lbs (67 kg)	\$1,611.00
Starglide 6' Wave	SG,6W	1 - SG,ENTRANCE; 1 - SG,WAVE; 1 - SG,STRAIGHT; 1 - SG,EXIT; 1 - SG,SUPPORT; 3 - SG,HARDWARE	172 lbs (78 kg)	\$1,774.00
Starglide 6' Wave Open Entrance	SGO,6W	1 - SGO,ENT; 1 - SG,WAVE; 1 - SG,STRAIGHT; 1 - SG,EXIT; 1 - SG,SUPPORT; 3 - SG,HARDWARE	147 lbs (67 kg)	\$1,611.00
Starglide 6' Veer Left	SG,6VEER,L	1 - SG,ENTRANCE; 1 - SG,TURN,LEFT; 1 - SG,STRAIGHT; 1 - SG,EXIT; 1 - SG,SUPPORT; 3 - SG,HARDWARE	172 lbs (78 kg)	\$1,774.00
Starglide 6' Veer Left Open Entrance	SGO,6VEER,L	1 - SGO,ENT; 1 - SG,TURN,LEFT; 1 - SG,STRAIGHT; 1 - SG,EXIT; 1 - SG,SUPPORT; 3 - SG,HARDWARE	147 lbs (67 kg)	\$1,611.00
Starglide 6' Veer Right	SG,6VEER,R	1 - SG,ENTRANCE; 1 - SG,TURN,RIGHT; 1 - SG,STRAIGHT; 1 - SG,EXIT; 1 - SG,SUPPORT; 3 - SG,HARDWARE	172 lbs (78 kg)	\$1,774.00
Starglide 6' Veer Right Open Entrance	SGO,6VEER,R	1 - SGO,ENT; 1 - SG,TURN,RIGHT; 1 - SG,STRAIGHT; 1 - SG,EXIT; 1 - SG,SUPPORT; 3 - SG,HARDWARE	147 lbs (67 kg)	\$1,611.00
Starglide 7' Straight	SG,7STR	1 - SG,ENTRANCE; 2 - SG,STR,DOUBLE; 1 - SG,EXIT; 1 - SG,SUPPORT; 3 - SG,HARDWARE	187 lbs (93 kg)	\$1,881.00
Starglide 7' Straight Open Entrance	SGO,7STR	1 - SGO,ENT; 2 - SG,STR,DOUBLE; 1 - SG,EXIT; 1 - SG,SUPPORT; 3 - SG,HARDWARE	162 lbs (73.5 kg)	\$1,718.00

A VEER IS 45°, A TURN IS 90°

Dimensions and weights are approximate. Prices subject to change without notice

SLIDES

Starglide Sectional Slide

SINGLE BED SLIDE CONFIGURATIONS INCLUDE				
Description	Part #	Includes	Weight	Retail Price
Starglide 7' Wave	SG,7W	1 - SG,ENTRANCE; 2 - SG,WAVE; 1 - SG,EXIT; 1 - SG,SUPPORT; 3 - SG,HARDWARE	187 lbs (93 kg)	\$1,881.00
Starglide 7' Wave Open Entrance	SGO,7W	1 - SGO,ENT; 2 - SG,WAVE; 1 - SG,EXIT; 1 - SG,SUPPORT; 3 - SG,HARDWARE	162 lbs (73.5 kg)	\$1,718.00
Starglide 7' Veer Left	SG,7VEER,L	1 - SG,ENTRANCE; 1 - SG,TURN,LEFT; 1 - SG,STR,DOUBLE; 1 - SG,EXIT; 1 - SG,SUPPORT; 3 - SG,HARDWARE	187 lbs (93 kg)	\$1,881.00
Starglide 7' Veer Left Open Entrance	SGO,7VEER,L	1 - SGO,ENT; 1 - SG,TURN,LEFT; 1 - SG,STR,DOUBLE; 1 - SG,EXIT; 1 - SG,SUPPORT; 3 - SG,HARDWARE	162 lbs (73.5 kg)	\$1,718.00
Starglide 7' Veer Left Wave	SG,7VEER,L,W	1 - SG,ENTRANCE; 1 - SG,TURN,LEFT; 1 - SG,WAVE; 1 - SG,EXIT; 1 - SG,SUPPORT; 3 - SG,HARDWARE	187 lbs (93 kg)	\$1,881.00
Starglide 7' Veer Left Wave Open Entrance	SGO,7VEER,L,W	1 - SGO,ENT; 1 - SG,TURN,LEFT; 1 - SG,WAVE; 1 - SG,EXIT; 1 - SG,SUPPORT; 3 - SG,HARDWARE	162 lbs (73.5 kg)	\$1,718.00
Starglide 7' Veer Right	SG,7VEER,R	1 - SG,ENTRANCE; 1 - SG,TURN,RIGHT; 1 - SG,STR,DOUBLE; 1 - SG,EXIT; 1 - SG,SUPPORT; 3 - SG,HARDWARE	187 lbs (93 kg)	\$1,881.00
Starglide 7' Veer Right Open Entrance	SGO,7VEER,R	1 - SGO,ENT; 1 - SG,TURN,RIGHT; 1 - SG,STR,DOUBLE; 1 - SG,EXIT; 1 - SG,SUPPORT; 3 - SG,HARDWARE	162 lbs (73.5 kg)	\$1,718.00
Starglide 7' Veer Right Wave	SG,7VEER,R,W	1 - SG,ENTRANCE; 1 - SG,TURN,RIGHT; 1 - SG,WAVE; 1 - SG,EXIT; 1 - SG,SUPPORT; 3 - SG,HARDWARE	187 lbs (93 kg)	\$1,881.00
Starglide 7' Veer Right Wave Open Entrance	SGO,7VEER,R,W	1 - SGO,ENT; 1 - SG,TURN,RIGHT; 1 - SG,WAVE; 1 - SG,EXIT; 1 - SG,SUPPORT; 3 - SG,HARDWARE	162 lbs (73.5 kg)	\$1,718.00
Starglide 7' Snake Left	SG,7SNAKE,L	1 - SG,ENTRANCE; 1 - SG,TURN,LEFT; 1 - SG,TURN,RIGHT; 1 - SG,EXIT; 1 - SG,SUPPORT; 3 - SG,HARDWARE	187 lbs (93 kg)	\$1,881.00
Starglide 7' Snake Left Open Entrance	SGO,7SNAKE,L	1 - SGO,ENT; 1 - SG,TURN,LEFT; 1 - SG,TURN,RIGHT; 1 - SG,EXIT; 1 - SG,SUPPORT; 3 - SG,HARDWARE	162 lbs (73.5 kg)	\$1,718.00
Starglide 7' Snake Right	SG,7SNAKE,R	1 - SG,ENTRANCE; 1 - SG,TURN,RIGHT; 1 - SG,TURN,LEFT; 1 - SG,EXIT; 1 - SG,SUPPORT; 3 - SG,HARDWARE	187 lbs (93 kg)	\$1,881.00
Starglide 7' Snake Right Open Entrance	SGO,7SNAKE,R	1 - SGO,ENT; 1 - SG,TURN,RIGHT; 1 - SG,TURN,LEFT; 1 - SG,EXIT; 1 - SG,SUPPORT; 3 - SG,HARDWARE	162 lbs (73.5 kg)	\$1,718.00
Starglide 7' Turn Left	SG,7TURN,L	1 - SG,ENTRANCE; 2 - SG,TURN,LEFT; 1 - SG,EXIT; 1 - SG,SUPPORT; 3 - SG,HARDWARE	187 lbs (93 kg)	\$1,881.00
Starglide 7' Turn Left Open Entrance	SGO,7TURN,L	1 - SGO,ENT; 2 - SG,TURN,LEFT; 1 - SG,EXIT; 1 - SG,SUPPORT; 3 - SG,HARDWARE	162 lbs (73.5 kg)	\$1,718.00
Starglide 7' Turn Right	SG,7TURN,R	1 - SG,ENTRANCE; 2 - SG,TURN,RIGHT; 1 - SG,EXIT; 1 - SG,SUPPORT; 3 - SG,HARDWARE	187 lbs (93 kg)	\$1,881.00
Starglide 7' T urn Right Open Entrance	SGO,7TURN,R	1 - SGO,ENT; 2 - SG,TURN,RIGHT; 1 - SG,EXIT; 1 - SG,SUPPORT; 3 - SG,HARDWARE	162 lbs (73.5 kg)	\$1,718.00
Starglide 8' Straight	SG,8STR	1 - SG,ENTRANCE; 1 - SG,STRAIGHT; 2 - SG,STR,DOUBLE; 1 - SG,EXIT; 1 - SG,SUPPORT; 4 - SG,HARDWARE	205 lbs (93 kg)	\$2,176.00
Starglide 8' Straight Open Entrance	SGO,8STR	1 - SGO,ENT; 1 - SG,STRAIGHT; 2 - SG,STR,DOUBLE; 1 - SG,EXIT; 1 - SG,SUPPORT; 4 - SG,HARDWARE	180 lbs (81.5 kg)	\$2,013.00

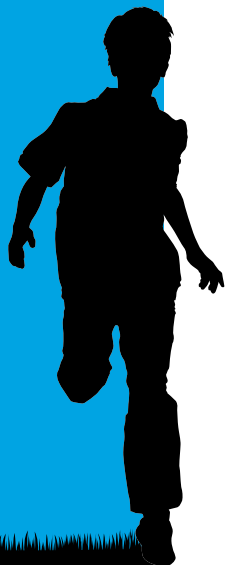
A VEER IS 45°, A TURN IS 90°

Dimensions and weights are approximate. Prices subject to change without notice



SLIDES

Starglide Sectional Slide



SINGLE BED SLIDE CONFIGURATIONS INCLUDE				
Description	Part #	Includes	Weight	Retail Price
Starglide 8' Wave	SG,8W	1 - SG,ENTRANCE; 1 - SG,STRAIGHT; 2 - SG,WAVE; 1 - SG,EXIT; 1 - SG,SUPPORT; 4 - SG,HARDWARE	205 lbs (93 kg)	\$2,176.00
Starglide 8' Wave Open Entrance	SGO,8W	1 - SGO,ENT; 1 - SG,STRAIGHT; 2 - SG,WAVE; 1 - SG,EXIT; 1 - SG,SUPPORT; 4 - SG,HARDWARE	180 lbs (81.5 kg)	\$2,013.00
Starglide 8' Veer Left	SG,8VEER,L	1 - SG,ENTRANCE; 1 - SG,TURN,LEFT; 1 - SG,STR,DOUBLE; 1 - SG,STRAIGHT; 1 - SG,EXIT; 1 - SG,SUPPORT; 4 - SG,HARDWARE	205 lbs (93 kg)	\$2,176.00
Starglide 8' Veer Left Open Entrance	SGO,8VEER,L	1 - SGO,ENT; 1 - SG,TURN,LEFT; 1 - SG,STR,DOUBLE; 1 - SG,STRAIGHT; 1 - SG,EXIT; 1 - SG,SUPPORT; 4 - SG,HARDWARE	180 lbs (81.5 kg)	\$2,013.00
Starglide 8' Veer Left Wave	SG,8VEER,L,W	1 - SG,ENTRANCE; 1 - SG,TURN,LEFT; 1 - SG,WAVE; 1 - SG,STRAIGHT; 1 - SG,EXIT; 1 - SG,SUPPORT; 4 - SG,HARDWARE	205 lbs (93 kg)	\$2,176.00
Starglide 8' Veer Left Wave Open Entrance	SGO,8VEER,L,W	1 - SGO,ENT; 1 - SG,TURN,LEFT; 1 - SG,WAVE; 1 - SG,STRAIGHT; 1 - SG,EXIT; 1 - SG,SUPPORT; 4 - SG,HARDWARE	180 lbs (81.5 kg)	\$2,013.00
Starglide 8' Veer Right	SG,8VEER,R	1 - SG,ENTRANCE; 1 - SG,TURN,RIGHT; 1 - SG,STR,DOUBLE; 1 - SG,STRAIGHT; 1 - SG,EXIT; 1 - SG,SUPPORT; 4 - SG,HARDWARE	205 lbs (93 kg)	\$2,176.00
Starglide 8' Veer Right Open Entrance	SGO,8VEER,R	1 - SGO,ENT; 1 - SG,TURN,RIGHT; 1 - SG,STR,DOUBLE; 1 - SG,STRAIGHT; 1 - SG,EXIT; 1 - SG,SUPPORT; 4 - SG,HARDWARE	180 lbs (81.5 kg)	\$2,013.00
Starglide 8' Veer Right Wave	SG,8VEER,R,W	1 - SG,ENTRANCE; 1 - SG,TURN,RIGHT; 1 - SG,WAVE; 1 - SG,STRAIGHT; 1 - SG,EXIT; 1 - SG,SUPPORT; 4 - SG,HARDWARE	205 lbs (93 kg)	\$2,176.00
Starglide 8' Veer Right Wave Open Entrance	SGO,8VEER,R,W	1 - SGO,ENT; 1 - SG,TURN,RIGHT; 1 - SG,WAVE; 1 - SG,STRAIGHT; 1 - SG,EXIT; 1 - SG,SUPPORT; 4 - SG,HARDWARE	180 lbs (81.5 kg)	\$2,013.00
Starglide 8' Turn Left	SG,8TURN,L	1 - SG,ENTRANCE; 2 - SG,TURN,LEFT; 1 - SG,STRAIGHT; 1 - SG,EXIT; 1 - SG,SUPPORT; 4 - SG,HARDWARE	205 lbs (93 kg)	\$2,176.00
Starglide 8' Turn Left Open Entrance	SGO,8TURN,L	1 - SGO,ENT; 2 - SG,TURN,LEFT; 1 - SG,STRAIGHT; 1 - SG,EXIT; 1 - SG,SUPPORT; 4 - SG,HARDWARE	180 lbs (81.5 kg)	\$2,013.00
Starglide 8' Turn Right	SG,8TURN,R	1 - SG,ENTRANCE; 2 - SG,TURN,RIGHT; 1 - SG,STRAIGHT; 1 - SG,EXIT; 1 - SG,SUPPORT; 4 - SG,HARDWARE	205 lbs (93 kg)	\$2,176.00
Starglide 8' Turn Right Open Entrance	SGO,8TURN,R	1 - SGO,ENT; 2 - SG,TURN,RIGHT; 1 - SG,STRAIGHT; 1 - SG,EXIT; 1 - SG,SUPPORT; 4 - SG,HARDWARE	180 lbs (81.5 kg)	\$2,013.00
Starglide 8' Snake Left	SG,8SNAKE,L	1 - SG,ENTRANCE; 1 - SG,TURN,LEFT; 1 - SG,TURN,RIGHT; 1 - SG,STRAIGHT; 1 - SG,EXIT; 1 - SG,SUPPORT; 4 - SG,HARDWARE	205 lbs (93 kg)	\$2,176.00
Starglide 8' Snake Left Open Entrance	SGO,8SNAKE,L	1 - SGO,ENT; 1 - SG,TURN,LEFT; 1 - SG,TURN,RIGHT; 1 - SG,STRAIGHT; 1 - SG,EXIT; 1 - SG,SUPPORT; 4 - SG,HARDWARE	180 lbs (81.5 kg)	\$2,013.00
Starglide 8' Snake Right	SG,8SNAKE,R	1 - SG,ENTRANCE; 1 - SG,TURN,RIGHT; 1 - SG,TURN,LEFT; 1 - SG,STRAIGHT; 1 - SG,EXIT; 1 - SG,SUPPORT; 4 - SG,HARDWARE	205 lbs (93 kg)	\$2,176.00
Starglide 8' Snake Right Open Entrance	SGO,8SNAKE,R	1 - SGO,ENT; 1 - SG,TURN,RIGHT; 1 - SG,TURN,LEFT; 1 - SG,STRAIGHT; 1 - SG,EXIT; 1 - SG,SUPPORT; 4 - SG,HARDWARE	180 lbs (81.5 kg)	\$2,013.00

A VEER IS 45°, A TURN IS 90°

Dimensions and weights are approximate. Prices subject to change without notice

SLIDES

Starglide Sectional Slide

TRIPLE BED SLIDE CONFIGURATIONS INCLUDE				
Each Slide Configuration listed from entrance looking down left to right				
Description	Part #	Includes	Weight	Retail Price
Starglide 5' Triple Bed Slide, Straight/Straight/Straight	SG,5TBS,SSS	1 - SG,TBS,ENT; 1 - SG,STR,DOUBLE; 1 - SG,EXIT; 2 - SG,HARDWARE/ 1 - SG,STR,DOUBLE; 1 - SG,EXIT; 2 - SG,HARDWARE/ 1 - SG,STR,DOUBLE; 1 - SG,EXIT; 2 - SG,HARDWARE	357.5 lbs (162.5 kg)	\$3,333.00
Starglide 5' Triple Bed Slide, Veer Left/Straight/Veer Right	SG,5TBS,VSV	1 - SG,TBS,ENT; 1 - SG,TURN,LEFT; 1 - SG,EXIT; 2 - SG,HARDWARE/ 1 - SG,STR,DOUBLE; 1 - SG,EXIT; 2 - SG,HARDWARE/ 1 - SG,TURN,RIGHT; 1 - SG,EXIT; 2 - SG,HARDWARE	357.5 lbs (162.5 kg)	\$3,333.00
Starglide 6' Triple Bed Slide, Straight/Straight/Straight	SG,6TBS,SSS	1 - SG,TBS,ENT; 1 - SG,STR,DOUBLE; 1 - SG,STRAIGHT; 1 - SG,EXIT; 1 - SG,SUPPORT; 3 - SG,HARDWARE/ 1 - SG,STR,DOUBLE; 1 - SG,STRAIGHT; 1 - SG,EXIT; 1 - SG,SUPPORT; 3 - SG,HARDWARE/ 1 - SG,STR,DOUBLE; 1 - SG,STRAIGHT; 1 - SG,EXIT; 1 - SG,SUPPORT; 3 - SG,HARDWARE	410 lbs (186 kg)	\$4,508.00
Starglide 6' Triple Bed Slide, Veer Left/Straight/Veer Right	SG,6TBS,VSV	1 - SG,TBS,ENT; 1 - SG,TURN,LEFT; 1 - SG,STRAIGHT; 1 - SG,EXIT; 1 - SG,SUPPORT; 3 - SG,HARDWARE/ 1 - SG,STR,DOUBLE; 1 - SG,STRAIGHT; 1 - SG,EXIT; 1 - SG,SUPPORT; 3 - SG,HARDWARE/ 1 - SG,TURN,RIGHT; 1 - SG,STRAIGHT; 1 - SG,EXIT; 1 - SG,SUPPORT; 3 - SG,HARDWARE	410 lbs (186 kg)	\$4,508.00
Starglide 7' Triple Bed Slide, Straight/Straight/Straight	SG,7TBS,SSS	1 - SG,TBS,ENT; 2 - SG,STR,DOUBLE; 1 - SG,EXIT; 1 - SG,SUPPORT; 3 - SG,HARDWARE/ 2 - SG,STR,DOUBLE; 1 - SG,EXIT; 1 - SG,SUPPORT; 3 - SG,HARDWARE/ 2 - SG,STR,DOUBLE; 1 - SG,EXIT; 1 - SG,SUPPORT; 3 - SG,HARDWARE	456.5 lbs (207 kg)	\$4,829.00
Starglide 7' Triple Bed Slide, Veer Left/Straight/Veer Right	SG,7TBS,VSV	1 - SG,TBS,ENT; 1 - SG,TURN,LEFT; 1 - SG,STR,DOUBLE; 1 - SG,EXIT; 1 - SG,SUPPORT; 3 - SG,HARDWARE/ 2 - SG,STR,DOUBLE; 1 - SG,EXIT; 1 - SG,SUPPORT; 3 - SG,HARDWARE/ 1 - SG,TURN,RIGHT; 1 - SG,STR,DOUBLE; 1 - SG,EXIT; 1 - SG,SUPPORT; 3 - SG,HARDWARE	456.5 lbs (207 kg)	\$4,829.00
Starglide 8' Triple Bed Slide, Straight/Straight/Straight	SG,8TBS,SSS	1 - SG,TBS,ENT; 1 - SG,STRAIGHT; 2 - SG,STR,DOUBLE; 1 - SG,EXIT; 1 - SG,SUPPORT; 4 - SG,HARDWARE/ 1 - SG,STRAIGHT; 2 - SG,STR,DOUBLE; 1 - SG,EXIT; 1 - SG,SUPPORT; 4 - SG,HARDWARE/ 1 - SG,STRAIGHT; 2 - SG,STR,DOUBLE; 1 - SG,EXIT; 1 - SG,SUPPORT; 4 - SG,HARDWARE	509 lbs (231 kg)	\$5,728.00
Starglide 8' Triple Bed Slide, Veer Left/Straight/Veer Right	SG,8TBS,VSV	1 - SG,TBS,ENT; 1 - SG,TURN,LEFT; 1 - SG,STR,DOUBLE; 1 - SG,STRAIGHT; 1 - SG,EXIT; 1 - SG,SUPPORT; 4 - SG,HARDWARE/ 1 - SG,STRAIGHT; 2 - SG,STR,DOUBLE; 1 - SG,EXIT; 1 - SG,SUPPORT; 4 - SG,HARDWARE/ 1 - SG,TURN,RIGHT; 1 - SG,STR,DOUBLE; 1 - SG,STRAIGHT; 1 - SG,EXIT; 1 - SG,SUPPORT; 4 - SG,HARDWARE	509 lbs (231 kg)	\$5,728.00

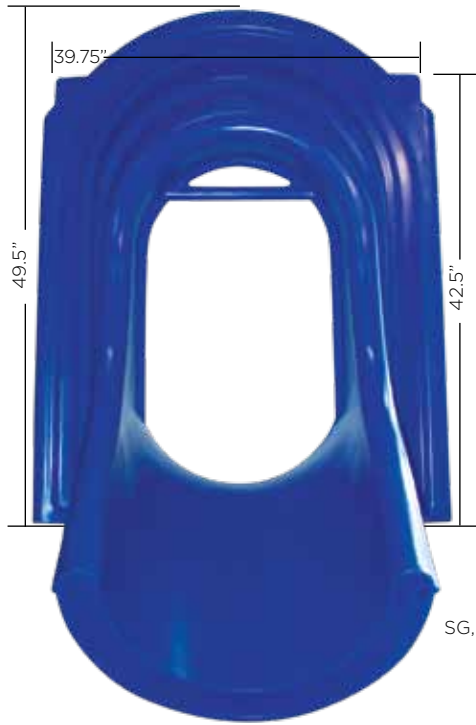
A VEER IS 45°, A TURN IS 90°

Dimensions and weights are approximate. Prices subject to change without notice



SLIDES

Starglide Sectional Slide



SG,ENTRANCE



SG,TBS,ENT



SG,EXIT



SGO,ENT

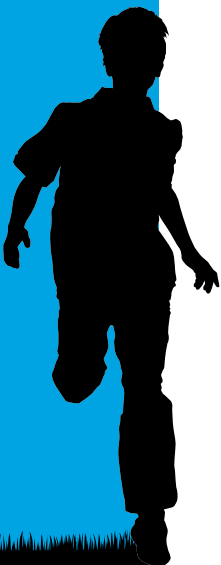


SG,WAVE



SG,SUPPORT

Description	Part #	Weight	Retail Price
Starglide Open Entrance	SGO,ENT	30 lbs (13.6 kg)	\$337.00
Starglide Entrance	SG,ENTRANCE	55 lbs (25 kg)	\$518.00
Starglide Exit	SG,EXIT	49.5 lbs (22.5 kg)	\$476.00
Starglide Straight	SG,STRAIGHT	17.5 lbs (8 kg)	\$234.00
Starglide Straight Double	SG,STR,DOUBLE	33 lbs (15 kg)	\$351.00
Starglide Support	SG,SUPPORT	16 lbs (7.25 kg)	\$92.00
Starglide Triple Bed Slide Entrance	SG,TBS,ENT	110 lbs (50 kg)	\$641.00
Starglide Turn Left	SG,TURN,LEFT	33 lbs (15 kg)	\$351.00
Starglide Turn Right	SG,TURN,RIGHT	33 lbs (15 kg)	\$351.00
Starglide Wave	SG,WAVE	33 lbs (15 kg)	\$351.00



SLIDES

Spiral Slide



- One piece 6' Spiral Slide with integral hood
- No assembly required
- No string entrapment concerns
- Sleek, smooth design
- Metal component includes 5" (12.7 cm) diameter full length pole, which includes extension for in-ground installation
- Metal plate provides shipping platform, as well as, support for slide exit

Description	Part #	Deck Height	Width	Height	Weight	Retail Price
6' Spiral Slide with Hood & Post	SS6,HP	67" - 75" (170.2 - 190.5 cm)	60" (1.5 m)	100" (2.5 m)	180 lbs (81.6 kg)	\$1,718.00

Dimensions and weights are approximate. Prices subject to change without notice

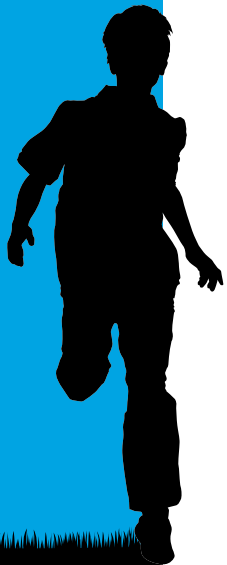


SLIDES

3' Triple Rail Slide



- Triple Rail Slides have two slide beds molded as one (1) complete unit
- Two versions; one with a foot and one without
- Rounded entrance and exit rails on 3TRS



Description	Part #	Deck Height	Width	Bed Width	Length	Weight	Retail Price
3' Deck Triple Rail Slide (with foot)	3TRS	36" (91.4 cm)	42" (107.7 cm)	17" x 2 (43.2 cm x 2)	60" (152.4 cm)	80 lbs (36.3 kg)	\$467.00
3' Deck Triple Rail Slide (no foot)	3TRS,OLD	36" (91.4 cm)	36" (91.4 cm)	13" x 2 (33 cm x 2)	78" (198 cm)	74 lbs (33.6 kg)	\$411.00

Dimensions and weights are approximate. Prices subject to change without notice

SLIDES

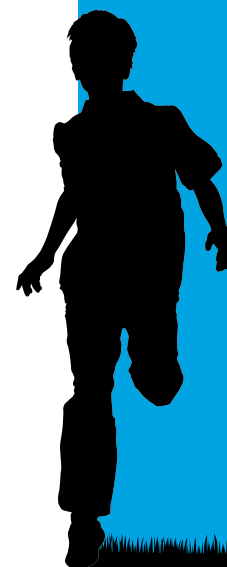
4' Triple Rail Wave Slide



- Triple Rail Slides have two slide beds molded as one (1) complete unit
- This great slide has one (1) **concave wave** and one (1) **convex wave**
- Rounded corners
- Molded-in foot

Description	Part #	Deck Height	Width	Bed Width	Length	Weight	Retail Price
4' Deck Triple Rail Wave Slide	4TRS	48" (122 cm)	41" (104 cm)	17" x 2 (43.2 cm x 2)	97¼" (247 cm)	140 lbs (63.5 kg)	\$544.00

Dimensions and weights are approximate. Prices subject to change without notice



SLIDES

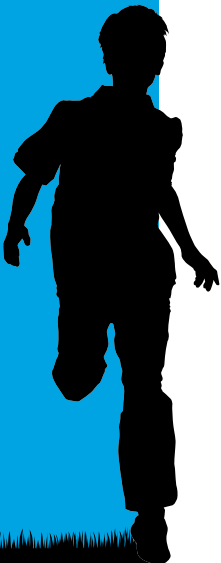
5' Triple Rail Wave Slide



- Triple Rail Wave Slides have two (2) bedways molded as one (1) complete unit
- One (1) **concave** and one (1) **convex** slide bed
- 3 molded-in mounting foot locations (2 at exit and 1 on back of slide in the centre)
- Rounded entrance and exit rails
- A truly DYNAMIC slide to add into your playground system!

Description	Part #	Deck Height	Width (at deck)	Max. Width (at exit)	Bed Width	Length	Weight	Retail Price
5' Deck Triple Rail Wave Slide	5TRS	60" (152 cm)	41" (104 cm)	55½" (141 cm)	16¼" x 2 (41.3 cm x 2)	117" (297 cm)	150 lbs (68 kg)	\$1,161.00

Dimensions and weights are approximate. Prices subject to change without notice





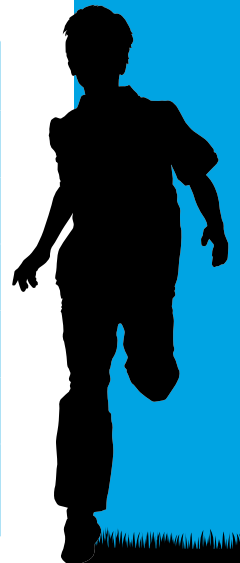
- Available in 24" and 30" diameters
- Molded in bell joints allow for connections for additional length or use with elbows
- 30" Tube Slide Spiral Includes:
Panel, Straight Tube, 90° Elbows,
Hardware (**Pipes, Saddles and EE30 Flanged Exit Extra**)

Please contact our team for custom deck heights, configurations and estimates.

800-269-6533 · www.spioplastics.com

Description	Part #	Deck Height	Diameter	Weight	Unassembled Retail Price	Assembled Add *NET*
Full Tube Spiral (72")	FSSA3072	72" (182.9 cm)	30" (76.2 cm)	300 lbs (136 kg)	\$2,304.00	\$330.00
Full Tube Spiral (84")	FSSA3084	84" (213.4 cm)	30" (76.2 cm)	365 lbs (165.5 kg)	\$2,421.00	\$340.00
Full Tube Spiral (96")	FSSA3096	96" (243.8 cm)	30" (76.2 cm)	365 lbs (165.5 kg)	\$2,421.00	\$340.00
Full Tube Spiral (120")	FSSA30120	120" (304.8 cm)	30" (76.2 cm)	425 lbs (192.8 kg)	\$2,765.00	\$360.00
Full Tube Spiral (144")	FSSA30144	144" (365.8 cm)	30" (76.2 cm)	555 lbs (251.7 kg)	\$2,989.00	\$400.00
Flanged Tube Exit (add on option for 30")	EE30	See Tube Section for dimensions and pricing information. Hardware price is extra. Call for details.				

Dimensions and weights are approximate. Prices subject to change without notice



SLIDES

Tube Slide



24" Full Tube Slide Assemblies — Straight

Includes: Panel, 2 - 30° Elbows, Straight Tube, Hardware (Pipes, Saddles and EE30 Flanged Exit Extra)

Description	Part #	Deck Height	Diameter	Weight	Unassembled Retail Price	Assembled Add *NET*
Full Tube Assembly (36")	FTA2436	36" (91.4 cm)	24" (60.9 cm)	94 lbs (42.6 kg)	\$765.00	\$82.50
Full Tube Assembly (48")	FTA2448	48" (122 cm)	24" (60.9 cm)	104 lbs (47.2 kg)	\$765.00	\$82.50
Full Tube Assembly (60")	FTA2460	60" (152.4 cm)	24" (60.9 cm)	115 lbs (52.2 kg)	\$777.00	\$110.00
Full Tube Assembly (72")	FTA2472	72" (183 cm)	24" (60.9 cm)	126 lbs (57.2 kg)	\$1120.00	\$110.00

30" Full Tube Slide Assemblies — Straight

Includes: Panel, 2 - 30° Elbows, Straight Tube, Hardware (Pipes, Saddles and EE30 Flanged Exit Extra)

Description	Part #	Deck Height	Diameter	Weight	Unassembled Retail Price	Assembled Add *NET*
Full Tube Assembly (48")	FTA3048	48" (122 cm)	30" (76.2 cm)	200 lbs (90.7 kg)	\$1,271.00	\$120.00
Full Tube Assembly (60")	FTA3060	60" (152.4 cm)	30" (76.2 cm)	210 lbs (95.3 kg)	\$1,271.00	\$120.00
Full Tube Assembly (72")	FTA3072	72" (183 cm)	30" (76.2 cm)	220 lbs (99.8 kg)	\$1,371.00	\$120.00
Full Tube Assembly (84")	FTA3084	84" (213.4 cm)	30" (76.2 cm)	295 lbs (133.8 kg)	\$1,768.00	\$160.00
Full Tube Assembly (96")	FTA3096	96" (243.8 cm)	30" (76.2 cm)	330 lbs (149.7 kg)	\$1,817.00	\$160.00
Flanged Tube Exit (add on option for 30")	EE30	See Tube Section for dimensions and pricing information. Hardware price is extra. Call for details.				

Dimensions and weights are approximate. Prices subject to change without notice

TUBES & COMPONENTS

Elbows.....	62
Flanged Tube Exit.....	63
Transition Components.....	64
24" Tubes.....	65
30" Tubes.....	65
Crawl Tubes.....	66





30° Elbow



90° Elbow

- Elbows are an integral part of any playground

- Elbows available for 24" and 30" (61cm and 76.2 cm) diameters

24" (61 cm) Elbows

Description	Part #	Diameter	Angle	Weight	Retail Price
30° Elbow	E2430	24" (61 cm)	30°	25 lbs (11.3 kg)	\$134.00
90° Elbow	E2490	24" (61 cm)	90°	32 lbs (14.5 kg)	\$346.00

30" (76.2 cm) Elbows

Description	Part #	Diameter	Angle	Weight	Retail Price
30° Elbow	E3030	30" (76.2 cm)	30°	62 lbs (28.1 kg)	\$327.00
45° Elbow	E3045	30" (76.2 cm)	45°	78 lbs (35.4 kg)	\$438.00
90° Elbow	E3090	30" (76.2 cm)	90°	65 lbs (29.5 kg)	\$327.00

Dimensions and weights are approximate. Prices subject to change without notice



TUBES & COMPONENTS

Flanged Tube Exit



- Flanged Tube Exit for the end of your tube slide
- Great sleek appearance

Description	Part #	4" Bell	Diameter	Length	Weight	Retail Price
Flanged Tube Exit	EE30	Yes	30" (76.2 cm)	39" (99.1 cm)	45 lbs (20.4 kg)	\$275.00

Dimensions and weights are approximate. Prices subject to change without notice



TUBES & COMPONENTS

Transition Components



- The Junction Cube has 5 potential openings allowing for installation flexibility and design creativity
- The T-Tube component allows the children to travel left or right within a system or can be capped off and made into a look-out!
- The Junction Cube and T-Tube are excellent transition points with a playground

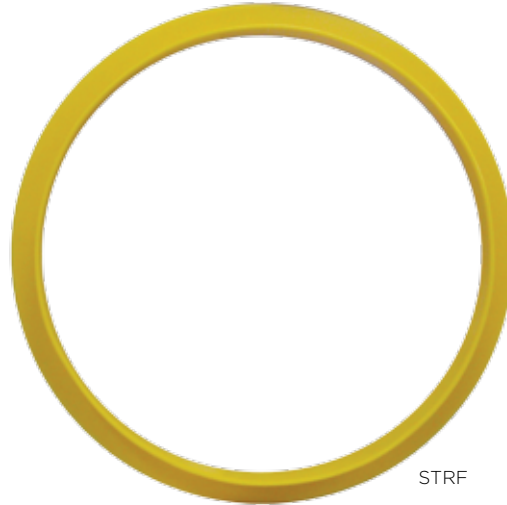
Description	Part #	Dimensions	Weight	Retail Price
Junction Cube	JC30	55½" l x 55½" w x 40½" h (141 cm x 141 cm x 118.1 cm)	100 lbs (45.4 kg)	\$746.00
T-Tube	TT30	51½" l x 41½" w x 31¾" h (130.8 cm x 105.4 cm x 80.6 cm)	78 lbs (35.4kg)	\$462.00

Dimensions and weights are approximate. Prices subject to change without notice





2' Tube



STRF

- Tubes are an integral part of any playground and 76.2 cm) diameters
- Tubes available for 24" and 30" (61cm

Description	Part #	3" Bell	Diameter	Length	Weight	Retail Price
24" - Full 2' Tube	24x2FTB	Yes	24" (61 cm)	24" (61 cm)	25 lbs (11.4 kg)	\$148.00
24" - Full 7' Tube	24x7FTB	Yes	24" (61 cm)	84" (213.4 cm)	75 lbs (34 kg)	\$413.00
30" - Full 2' Tube	30x2FTB	Yes	30" (76.2 cm)	24" (61 cm)	45 lbs (20.4 kg)	\$215.00
30" - Full 5' Tube	30x5FTB	Yes	30" (76.2 cm)	60" (152.4 cm)	90 lbs (40.8 kg)	\$434.00
30" - Full 6' Tube	30x6FTB	Yes	30" (76.2 cm)	72" (182.9 cm)	105 lbs (47.6 kg)	\$550.00
30" - Full 7' Tube	30x7FTB	Yes	30" (76.2 cm)	84" (213.4 cm)	110 lbs (49.9 kg)	\$550.00

Description	Part #	Diameter	Weight	Retail Price
Straight Flange	STRF	34½" (87.6 cm)	5.5 lbs (2.5 kg)	\$184.00

Dimensions and weights are approximate. Prices subject to change without notice



TUBES & COMPONENTS

Crawl Tube Assemblies



· 24" and 30" crawl tube assemblies available.

Please contact our team for customized designed crawl tubes, incline crawls, elbow crawls and more.

800-269-6533 · www.spioplastics.com



Contained Play 68-70

CONTAINED PLAY



CONTAINED PLAY



- SPI provides safe, interactive, age appropriate play
- Variety of design styles
- Contact our office to provide you with designs and quotations.

- Suggested Play Events:
 - Twist n' Turn Seats
 - Activity Panels
 - Bedrock Climber
 - Toddler Slides
 - and more...





Turn key service from design to installation and service.

- Any footprint
- Number of play events
- GetFit package

VISIT OUR ONLINE LIBRARY OR DESIGN EXAMPLES AND RECENT PROJECT SHOWCASE

PLEASE CONTACT OUR TEAM FOR CUSTOM DESIGNS & QUOTATIONS

800-269-6533

www.spioutdoorplay.com



CONTAINED PLAY



VISIT OUR ONLINE LIBRARY
OR DESIGN EXAMPLES AND
RECENT PROJECT SHOWCASE
PLEASE CONTACT OUR TEAM
FOR CUSTOM DESIGNS &
QUOTATIONS

800-269-6533

www.spioutdoorplay.com



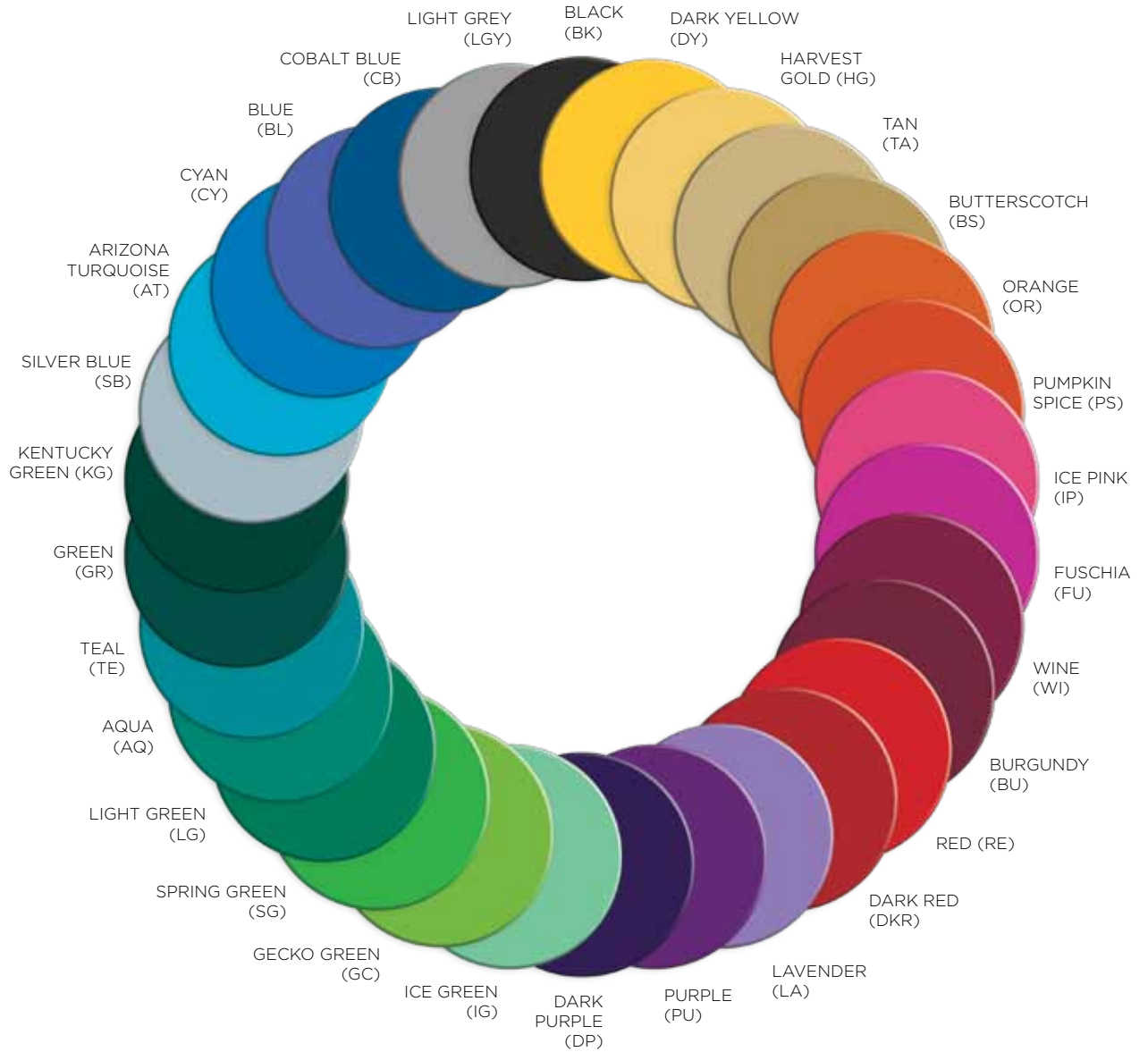
Plastic Colours.....72
Resin Specifications.....73
Warranty & CAD Files.....74

APPENDIX



APPENDIX

Plastic Colours



POLYETHYLENE RESIN SPECIFICATIONS			
TEST PROCEDURE		UNITS	EXXON LLP8360
Density	ASTM D-1505	g/cm ³	0.932
Melt Index	ASTM-D1238 Condition 2, 16, 190	g/10 min.	5.2
ESCR Cond. A, F50	ASTM D-1693 100% Igepal 10% Igepal	hrs. hrs.	> 1,000 650
Flexural Modulus	At 1% strain ASTM D-790	psi Mpa	600 (87,000)
Tensile Strength	at Yield 2" (50.8 mm) per minute Type IV Specimen @ .125" (3.17 mm) Thickness ASTM D-638	psi Mpa	15.1 (2200)
Heat Distortion	ISO 75-B at: 66 psi (4.64 kg/cm ³) 264 psi (18.56 kg/cm ³)	degrees Celsius	- 66°
Impact Strength	ISO 6603/2 for: 1/8" (3.17 mm) specimen 1/4" (6.35 mm) specimen	ft. lbs. Joules ft. lbs. Joules	- 88 (65) - 217 (160)
Meets FDA Requirements			yes
UV-Stabilized			yes

All SPI parts comply with CAN/CAS-Z614-03; ASTM



WARRANTY

This Warranty policy is for plastic Playground Components manufactured by SPI Industries Inc.

It is the goal of SPI to provide our customers with the playground components. Our extensive knowledge of the industry is your assurance that you will receive quality playground components.

SPI provides a 10 (ten) year limited warranty for all SPI Polyethylene Components. This warranty covers structural failure for the value of the product, not including freight charges or labour expense. Warranty does not cover vandalism or cosmetic issues (such as color fading).

CAD FILES

Please note the .DWG and Images for the various components listed in this catalogue are available for you to download.

The CAD files are Autocad 2002 compatible. Some of the files may work back to Autocad 14, but due to software continuous changes this is not always compatible.

Most files are drawn in solids, but some complex components are drawn in surfaces and are not exact representations.

To find out how to access these files please contact our office at 1-800-269-6533.





**CALL US FOR
A QUOTE TODAY**

800-269-6533

www.spiplastics.com

